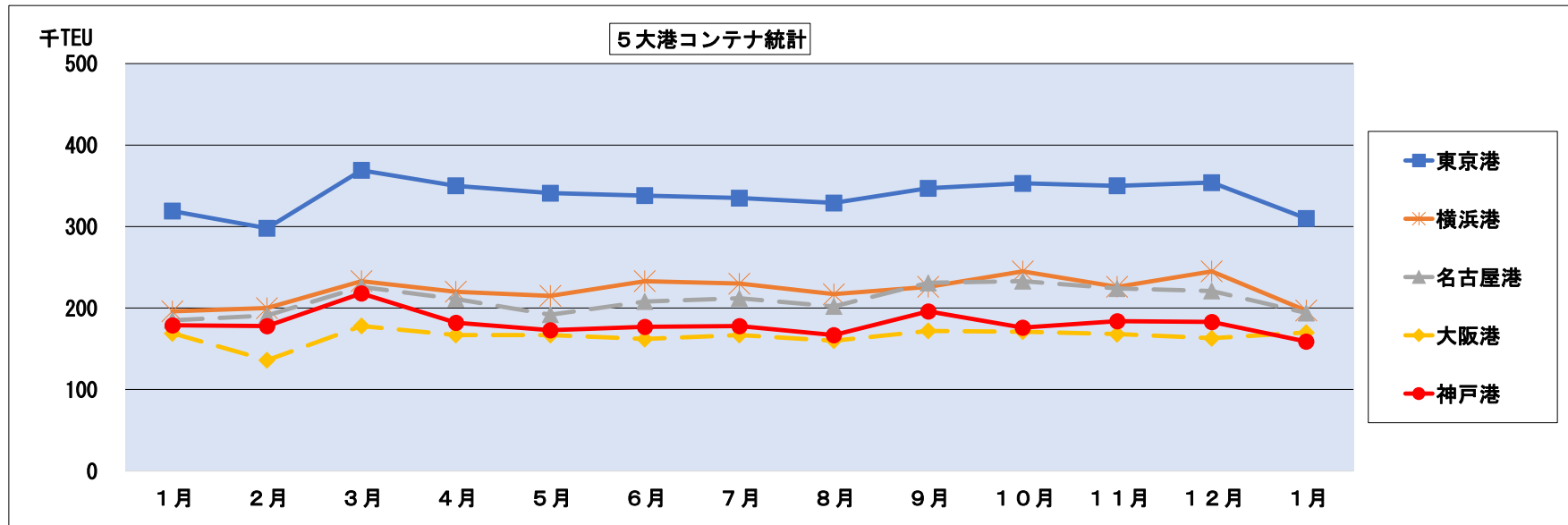


図 1-1 主要5大港コンテナ統計

2024年 1月

(単位:TEU)

	2023年												2024年	2023/2~ 2024/1 計
	1月	2月	3月	4月	5月	6月	7月	8月	9月	10月	11月	12月	1月	
東京港	319,496	297,877	368,657	350,172	340,633	338,229	334,920	328,681	346,840	352,680	350,475	353,816	310,038	4,073,018
前年同期	353,546	319,624	367,073	355,309	354,952	398,000	405,133	395,020	359,073	393,065	357,001	375,038	319,496	4,398,784
前年同期比	90.4%	93.2%	100.4%	98.6%	96.0%	85.0%	82.7%	83.2%	96.6%	89.7%	98.2%	94.3%	97.0%	92.6%
横浜港	196,407	199,507	233,197	220,057	214,920	232,954	230,068	216,913	226,022	245,031	226,214	245,142	196,949	2,686,974
前年同期	200,106	220,224	209,533	219,583	196,359	229,248	234,373	220,763	214,702	238,035	212,003	231,886	196,407	2,623,116
前年同期比	98.2%	90.6%	111.3%	100.2%	109.5%	101.6%	98.2%	98.3%	105.3%	102.9%	106.7%	105.7%	100.3%	102.4%
名古屋港	184,770	191,133	225,750	210,818	192,007	207,765	211,562	202,260	230,739	232,938	223,702	220,681	194,028	2,543,383
前年同期	214,996	200,001	223,539	209,042	196,642	214,161	210,243	210,580	204,357	228,306	209,695	209,774	184,770	2,501,110
前年同期比	85.9%	95.6%	101.0%	100.8%	97.6%	97.0%	100.6%	96.0%	112.9%	102.0%	106.7%	105.2%	105.0%	101.7%
大阪港	169,403	136,155	178,010	167,299	166,672	161,732	166,928	160,371	172,495	170,727	168,499	163,082	170,264	1,982,234
前年同期	191,898	144,859	176,293	160,805	164,952	191,746	187,468	195,568	177,128	192,098	185,544	162,054	169,403	2,107,918
前年同期比	88.3%	94.0%	101.0%	104.0%	101.0%	84.3%	89.0%	82.0%	97.4%	88.9%	90.8%	100.6%	100.5%	94.0%
神戸港	178,521	178,204	218,314	182,225	173,242	176,906	178,017	167,094	195,916	176,119	183,991	182,504	159,429	2,171,961
前年同期	178,265	164,876	198,237	190,854	174,946	201,625	189,044	190,698	181,147	198,825	193,884	191,088	178,521	2,253,745
前年同期比	100.1%	108.1%	110.1%	95.5%	99.0%	87.7%	94.2%	87.6%	108.2%	88.6%	94.9%	95.5%	89.3%	96.4%
5大港計	1,048,597	1,002,876	1,223,928	1,130,571	1,087,474	1,117,586	1,121,495	1,075,319	1,172,012	1,177,495	1,152,881	1,165,225	1,030,708	13,457,570
前年同期	1,138,811	1,049,584	1,174,675	1,135,593	1,087,851	1,234,780	1,226,261	1,212,629	1,136,407	1,250,329	1,158,127	1,169,840	1,048,597	13,884,673
前年同期比	92.1%	95.5%	104.2%	99.6%	100.0%	90.5%	91.5%	88.7%	103.1%	94.2%	99.5%	99.6%	98.3%	96.9%



\* 補足 2024年2月の東京港の外貿コンテナ取扱個数(最速報値)は31.1万TEU

	総計 TEU	輸出 TEU	輸入 TEU
2024年2月 最速報値	310,808	145,603	165,205
2023年2月 速報値	297,877	143,013	154,864
比率 (%)	104.3%	101.8%	106.7%

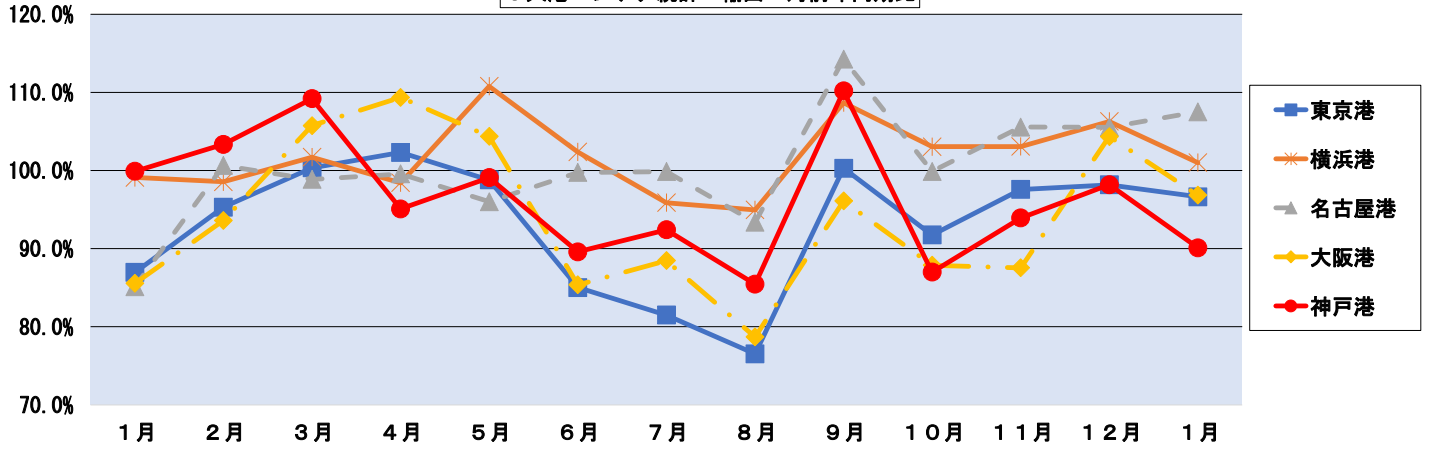
図1-2 主要5大港コンテナ統計 輸出・輸入別

2024年 1月

(単位: TEU)

	2023年												2024年 1月	2023/1~ 2024/1 計	
	1月	2月	3月	4月	5月	6月	7月	8月	9月	10月	11月	12月			
東京港	輸出	139,506	143,013	164,622	168,050	154,772	156,200	152,887	143,863	163,705	170,792	163,402	177,869	134,816	1,893,991
	前年同期	160,424	150,056	164,050	164,245	156,660	183,725	187,602	187,963	163,222	186,140	167,463	181,173	139,506	2,031,805
	前年同期比	87.0%	95.3%	100.3%	102.3%	98.8%	85.0%	81.5%	76.5%	100.3%	91.8%	97.6%	98.2%	96.6%	93.2%
横浜港	輸出	98,962	113,267	122,471	117,422	112,623	124,326	120,160	111,599	122,535	131,521	118,859	133,141	99,968	1,427,892
	前年同期	99,856	114,922	120,419	119,296	101,670	121,444	125,320	117,525	112,745	127,631	115,322	125,272	98,962	1,400,528
	前年同期比	99.1%	98.6%	101.7%	98.4%	110.8%	102.4%	95.9%	95.0%	108.7%	103.0%	103.1%	106.3%	101.0%	102.0%
名古屋港	輸出	88,994	105,788	116,570	112,094	98,303	111,844	108,380	101,284	120,063	122,232	116,851	121,038	95,689	1,330,136
	前年同期	104,524	105,114	117,910	112,574	102,383	112,109	108,531	108,459	105,078	122,376	110,686	114,669	88,994	1,308,883
	前年同期比	85.1%	100.6%	98.9%	99.6%	96.0%	99.8%	99.9%	93.4%	114.3%	99.9%	105.6%	105.6%	107.5%	101.6%
大阪港	輸出	73,593	65,501	81,240	81,256	76,547	76,192	75,589	71,965	79,085	80,640	76,407	81,367	71,266	917,055
	前年同期	86,006	69,962	76,821	74,298	73,346	89,252	85,437	91,449	82,291	91,762	87,265	77,971	73,593	973,447
	前年同期比	85.6%	93.6%	105.8%	109.4%	104.4%	85.4%	88.5%	78.7%	96.1%	87.9%	87.6%	104.4%	96.8%	94.2%
神戸港	輸出	89,518	97,143	116,268	99,208	90,452	97,729	92,812	85,458	104,806	95,134	96,220	102,612	80,675	1,158,517
	前年同期	89,601	93,996	106,475	104,324	91,289	109,076	100,427	100,004	95,118	109,347	102,445	104,512	89,518	1,206,531
	前年同期比	99.9%	103.3%	109.2%	95.1%	99.1%	89.6%	92.4%	85.5%	110.2%	87.0%	93.9%	98.2%	90.1%	96.0%
5大港計	輸出	490,573	524,712	601,171	578,030	532,697	566,291	549,828	514,169	590,194	600,319	571,739	616,027	482,414	6,727,591
	前年同期	540,411	534,050	585,675	574,737	525,348	615,606	607,317	605,400	558,454	637,256	583,181	603,597	490,573	6,921,194
	前年同期比	90.8%	98.3%	102.6%	100.6%	101.4%	92.0%	90.5%	84.9%	105.7%	94.2%	98.0%	102.1%	98.3%	97.2%
5大港計	輸入	558,024	478,164	622,757	552,542	554,777	551,294	571,668	561,150	581,818	577,177	581,144	549,199	548,296	6,729,986
	前年同期	598,401	515,534	589,001	560,856	562,501	619,173	618,945	607,229	577,953	613,074	574,946	566,243	558,024	6,963,479
	前年同期比	93.3%	92.8%	105.7%	98.5%	98.6%	89.0%	92.4%	92.4%	100.7%	94.1%	101.1%	97.0%	98.3%	96.6%

5大港コンテナ統計 輸出 対前年同期比



5大港コンテナ統計 輸入 対前年同期比

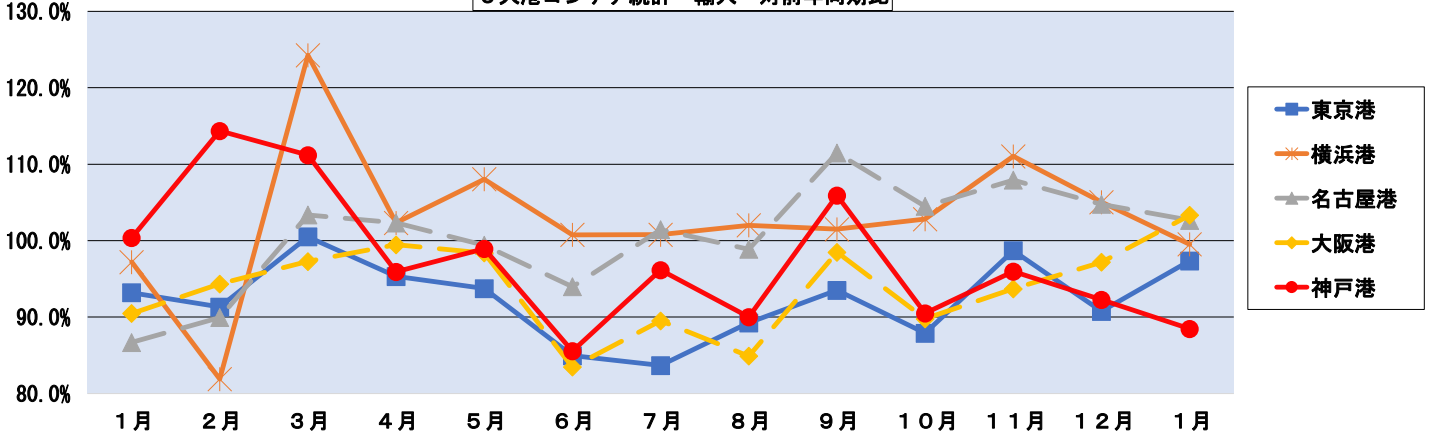


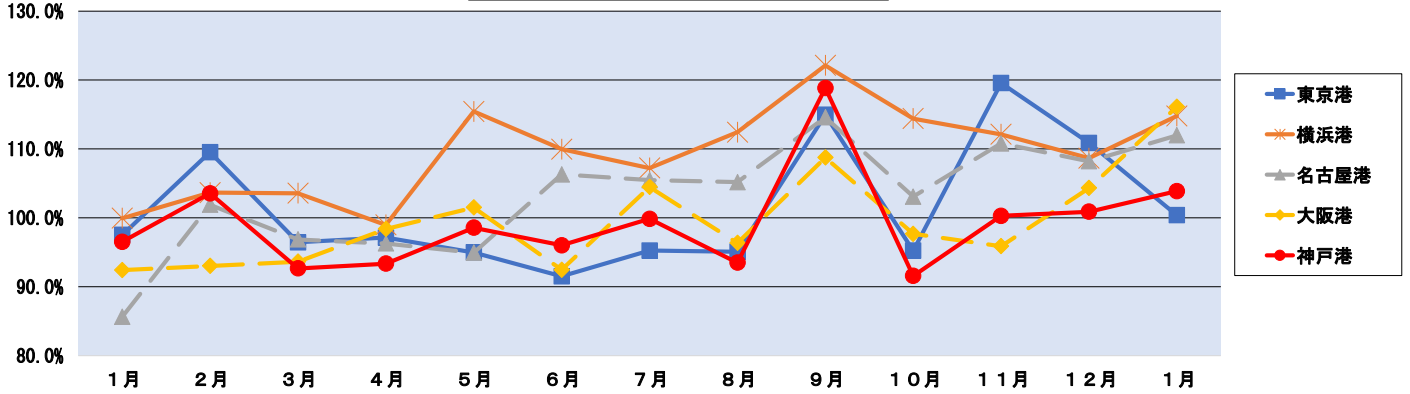
図 1-3 主要5港コンテナ統計 輸出 実入・空別

2024年 1月

(単位: TEU)

	2023年												2024年	2023/2~	
	1月	2月	3月	4月	5月	6月	7月	8月	9月	10月	11月	12月	1月	2024/1 計	
東京港	実入	55,848	76,025	77,935	77,480	64,613	73,111	74,907	67,474	79,318	88,744	80,239	86,555	56,064	902,465
	前年同期	57,265	69,408	80,801	79,767	68,027	79,883	78,643	70,956	69,003	93,190	67,109	78,062	55,848	890,697
	前年同期比	97.5%	109.5%	96.5%	97.1%	95.0%	91.5%	95.2%	95.1%	114.9%	95.2%	119.6%	110.9%	100.4%	101.3%
横浜港	実入	83,658	66,988	86,687	90,570	90,159	83,089	77,980	76,389	84,387	82,048	83,163	91,314	78,752	991,526
	前年同期	103,159	80,648	83,249	84,478	88,633	103,842	108,959	117,007	94,219	92,950	100,354	103,111	83,658	1,141,108
	前年同期比	81.1%	83.1%	104.1%	107.2%	101.7%	80.0%	71.6%	65.3%	89.6%	88.3%	82.9%	88.6%	94.1%	86.9%
名古屋港	実入	63,373	84,523	89,377	84,846	79,804	91,848	90,157	84,038	93,817	100,837	90,639	99,558	72,743	1,062,187
	前年同期	63,410	81,543	86,303	85,729	69,135	83,525	84,072	74,748	76,822	88,143	80,834	91,620	63,373	965,847
	前年同期比	99.9%	103.7%	103.6%	99.0%	115.4%	110.0%	107.2%	112.4%	122.1%	114.4%	112.1%	108.7%	114.8%	110.0%
大阪港	実入	35,589	28,745	33,094	32,576	32,820	32,479	30,003	27,562	28,718	30,684	28,220	33,583	27,225	365,709
	前年同期	36,446	33,379	34,116	33,567	32,535	37,919	41,248	42,777	35,923	39,488	34,488	33,652	35,589	434,681
	前年同期比	97.6%	86.1%	97.0%	97.0%	100.9%	85.7%	72.7%	64.4%	79.9%	77.7%	81.8%	99.8%	76.5%	84.1%
神戸港	実入	63,516	84,756	92,265	88,223	74,858	91,480	87,627	80,810	93,414	96,629	93,425	96,931	71,124	1,051,542
	前年同期	74,165	83,171	95,242	91,629	78,842	86,060	83,080	76,834	81,520	93,744	84,313	89,578	63,516	1,007,529
	前年同期比	85.6%	101.9%	96.9%	96.3%	94.9%	106.3%	105.5%	105.2%	114.6%	103.1%	110.8%	108.2%	112.0%	104.4%
5大港計	実入	24,379	30,723	34,557	34,414	31,095	33,925	34,281	28,769	32,834	35,842	32,999	35,401	28,311	393,151
	前年同期	26,378	33,024	36,902	34,978	30,635	36,690	32,814	29,858	30,190	36,695	34,415	33,933	24,379	394,513
	前年同期比	92.4%	93.0%	93.6%	98.4%	101.5%	92.5%	104.5%	96.4%	108.8%	97.7%	95.9%	104.3%	116.1%	99.7%

5大港コンテナ統計 輸出 実入 対前年同期比



5大港コンテナ統計 輸出 空 対前年同期比

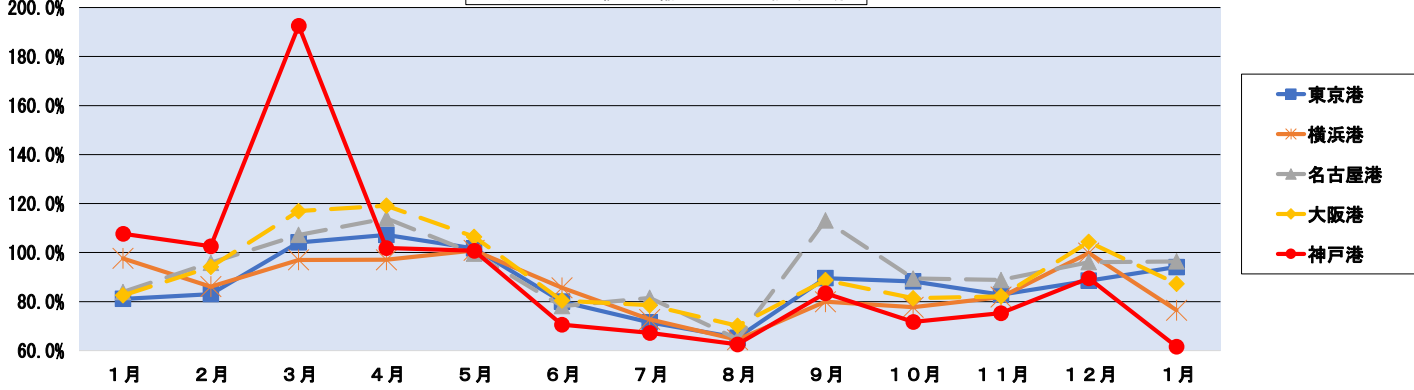


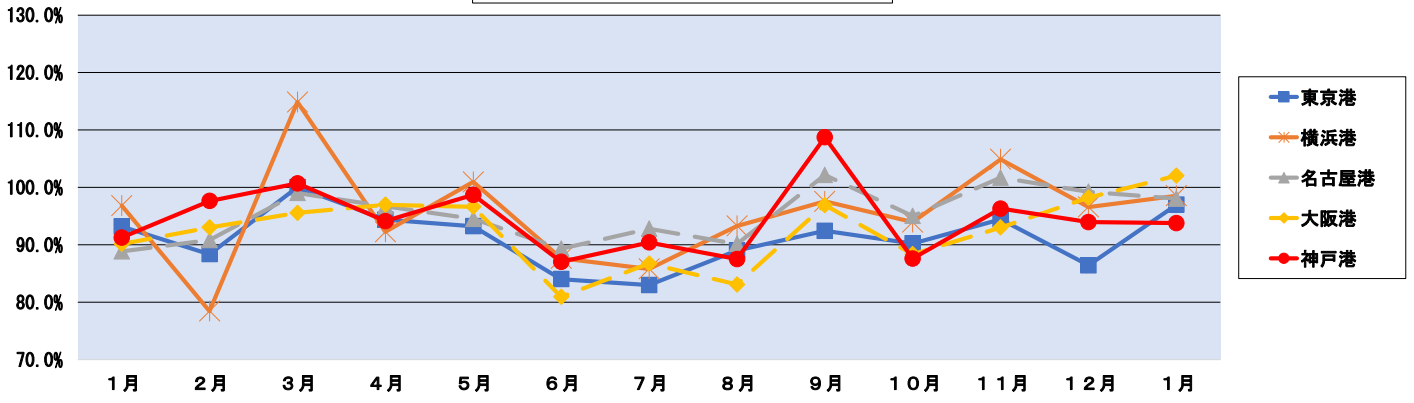
図1-4 主要5港コンテナ統計 輸入 実入・空別

2024年1月

(単位:TEU)

	2023年												2024年	2023/2~ 2024/1 計	
	1月	2月	3月	4月	5月	6月	7月	8月	9月	10月	11月	12月	1月		
東京港	実入	179,210	148,541	200,474	178,740	183,591	178,911	179,409	183,469	178,800	175,246	177,689	166,061	173,801	2,124,732
	前年同期	192,290	168,096	200,387	189,362	196,910	212,952	216,179	206,078	193,450	194,178	188,108	192,126	179,210	2,337,036
	前年同期比	93.2%	88.4%	100.0%	94.4%	93.2%	84.0%	83.0%	89.0%	92.4%	90.3%	94.5%	86.4%	97.0%	90.9%
横浜港	実入	780	6,323	3,561	3,382	2,270	3,118	2,624	1,349	4,335	6,642	9,384	9,886	1,421	54,295
	前年同期	832	1,472	2,636	1,702	1,382	1,323	1,352	979	2,401	12,747	1,430	1,739	780	29,943
	前年同期比	93.8%	429.6%	135.1%	198.7%	164.3%	235.7%	194.1%	137.8%	180.5%	52.1%	656.2%	568.5%	182.2%	181.3%
名古屋港	実入	94,198	78,591	95,911	88,594	93,079	92,716	91,294	92,585	93,608	95,743	94,076	93,234	92,829	1,102,260
	前年同期	97,293	100,174	83,489	96,024	92,188	105,774	106,405	99,253	95,942	101,895	89,689	96,523	94,198	1,161,554
	前年同期比	96.8%	78.5%	114.9%	92.3%	101.0%	87.7%	85.8%	93.3%	97.6%	94.0%	104.9%	96.6%	98.5%	94.9%
大阪港	実入	91,950	76,268	96,725	88,056	87,088	86,397	90,946	88,789	96,147	95,993	94,088	86,465	90,163	1,077,125
	前年同期	103,480	83,979	97,675	91,056	92,135	96,730	97,990	98,491	94,109	101,014	92,519	87,123	91,950	1,124,771
	前年同期比	88.9%	90.8%	99.0%	96.7%	94.5%	89.3%	92.8%	90.1%	102.2%	95.0%	101.7%	99.2%	98.1%	95.8%
神戸港	実入	75,845	62,610	81,834	73,521	76,676	73,526	73,909	73,137	84,065	71,315	77,494	67,615	71,127	886,829
	前年同期	83,107	64,131	81,268	78,108	77,687	84,467	81,754	83,571	77,324	81,408	80,462	71,961	75,845	937,986
	前年同期比	91.3%	97.6%	100.7%	94.1%	98.7%	87.0%	90.4%	87.5%	108.7%	87.6%	96.3%	94.0%	93.8%	94.5%
5大港計	実入	535,739	434,661	568,388	512,043	528,149	513,688	522,936	523,184	543,741	525,146	531,938	492,846	524,386	6,221,106
	前年同期	581,036	490,178	560,602	540,273	549,690	601,396	603,072	589,931	554,854	576,769	546,011	528,635	535,739	6,677,150
	前年同期比	92.2%	88.7%	101.4%	94.8%	96.1%	85.4%	86.7%	88.7%	98.0%	91.0%	97.4%	93.2%	97.9%	93.2%
東京港	空	2,967	2,957	3,262	2,912	2,410	3,402	3,962	3,202	2,292	3,238	3,502	2,244	2,533	35,023
	前年同期	1,274	2,003	3,326	2,912	2,410	3,402	3,962	3,202	2,292	3,238	3,502	2,244	2,533	35,023
	前年同期比	124.1%	182.3%	196.6%	371.4%	288.6%	333.5%	307.8%	202.5%	283.3%	157.0%	115.0%	70.5%	198.8%	187.6%
横浜港	空	3,826	9,077	12,455	10,669	6,616	9,524	12,236	12,187	14,529	14,714	12,764	13,178	8,177	136,126
	前年同期	6,993	10,908	7,954	5,412	2,123	5,322	3,723	3,630	5,170	6,490	7,982	3,826	8,177	67,457
	前年同期比	54.7%	83.2%	156.6%	197.1%	311.6%	179.0%	328.7%	335.7%	281.0%	229.2%	196.7%	165.1%	213.7%	201.8%
名古屋港	空	96,826	78,512	114,909	92,309	101,000	87,777	85,888	93,300	97,600	94,000	104,900	96,600	98,500	1,156,823
	前年同期	2,957	5,128	5,625	4,263	2,501	2,030	2,648	3,985	6,015	8,509	6,992	10,091	3,248	61,035
	前年同期比	109.8%	149.2%	263.4%	329.3%	368.6%	783.8%	703.0%	319.4%	164.2%	208.8%	189.9%	186.0%	127.8%	256.9%
大阪港	空	3,826	9,077	12,455	10,669	6,616	9,524	12,236	12,187	14,529	14,714	12,764	13,178	8,177	136,126
	前年同期	6,993	10,908	7,954	5,412	2,123	5,322	3,723	3,630	5,170	6,490	7,982	3,826	8,177	67,457
	前年同期比	54.7%	83.2%	156.6%	197.1%	311.6%	179.0%	328.7%	335.7%	281.0%	229.2%	196.7%	165.1%	213.7%	201.8%
神戸港	空	13,158	18,451	20,212	9,496	6,114	5,651	11,296	8,499	7,045	9,670	10,277	12,277	7,627	126,615
	前年同期	5,557	6,749	10,494	8,422	5,970	8,082	6,863	7,123	8,705	8,070	10,977	14,615	13,158	109,228
	前年同期比	236.8%	273.4%	192.6%	112.8%	102.4%	69.9%	164.6%	119.3%	80.9%	119.8%	93.6%	84.0%	58.0%	115.9%

5大港コンテナ統計 輸入 実入 対前年同期比



5大港コンテナ統計 輸入 空 (TEU)

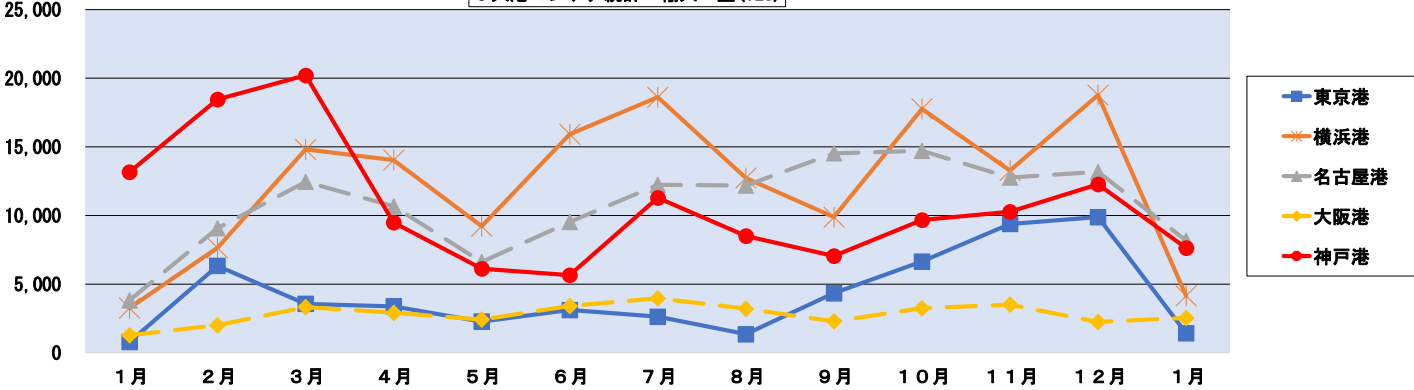


図1-5 主要5大港コンテナ統計 前年同月比・19年同月比

		2023年												2024年
		1月	2月	3月	4月	5月	6月	7月	8月	9月	10月	11月	12月	1月
東京港	前年比	90%	93%	100%	99%	96%	85%	83%	83%	97%	90%	98%	94%	97%
	19年比	88%	88%	96%	92%	102%	85%	84%	89%	89%	96%	89%	91%	86%
横浜港	前年比	98%	91%	111%	100%	109%	102%	98%	98%	105%	103%	107%	106%	100%
	19年比	91%	95%	95%	95%	97%	97%	98%	99%	104%	114%	98%	112%	91%
名古屋港	前年比	86%	96%	101%	101%	98%	97%	101%	96%	113%	102%	107%	105%	105%
	19年比	87%	93%	94%	94%	87%	92%	91%	96%	106%	103%	104%	102%	92%
大阪港	前年比	88%	94%	101%	104%	101%	84%	89%	82%	97%	89%	91%	101%	101%
	19年比	92%	94%	98%	93%	96%	94%	86%	93%	94%	92%	95%	90%	93%
神戸港	前年比	100%	108%	110%	95%	99%	88%	94%	88%	108%	89%	95%	96%	89%
	19年比	100%	104%	110%	98%	95%	95%	93%	97%	115%	95%	102%	98%	89%
5大港計	前年比	92%	96%	104%	100%	100%	91%	91%	89%	103%	94%	100%	100%	98%
	19年比	91%	94%	98%	94%	96%	91%	90%	94%	99%	100%	96%	98%	90%

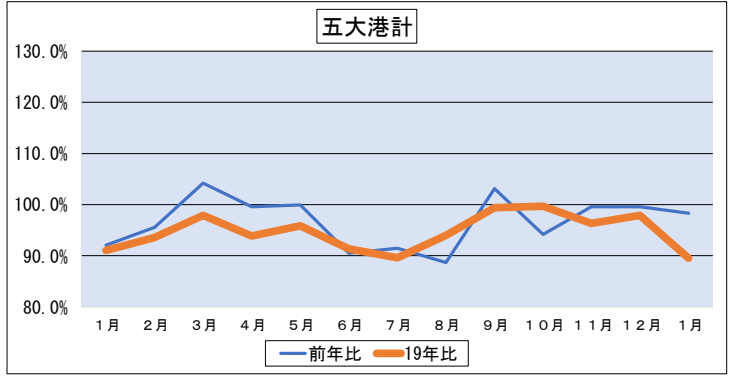
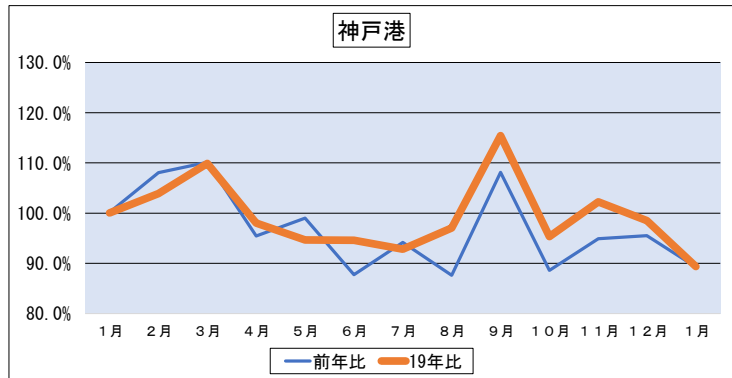
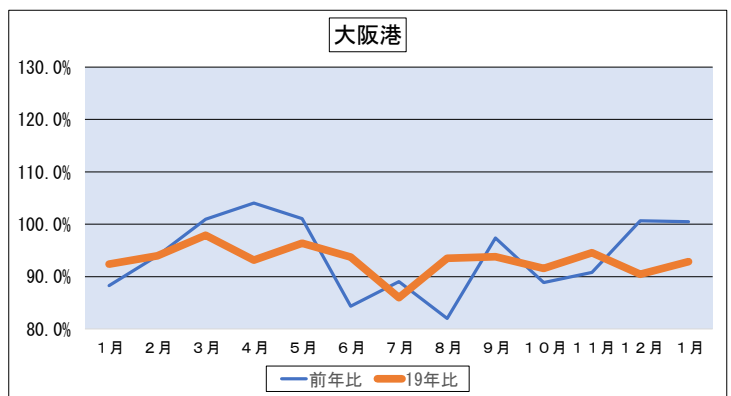
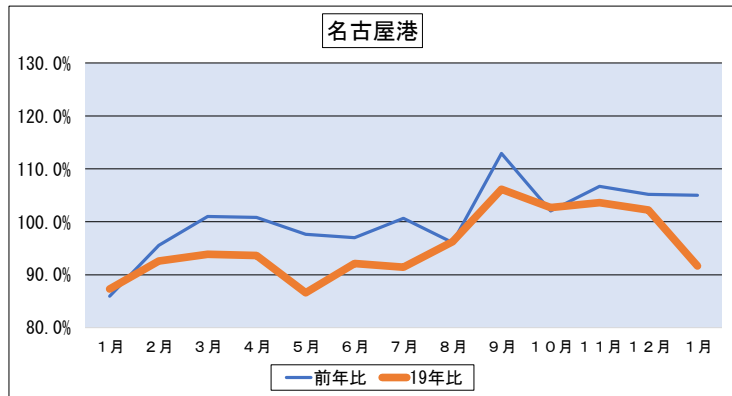
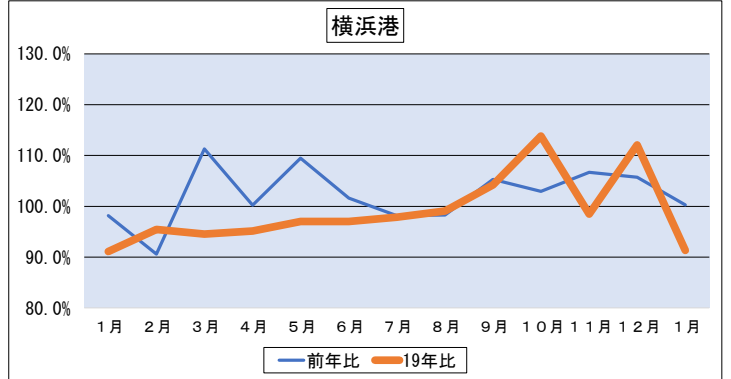
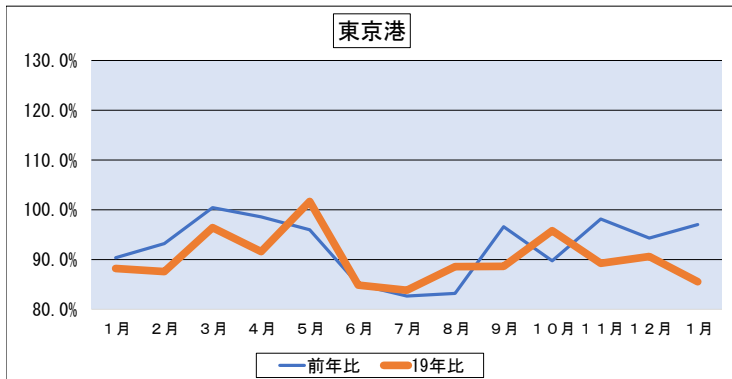


図1-6 主要5大港コンテナ統計 輸出・輸入 前年同月比・19年同月比

		2023年												2024年
		1月	2月	3月	4月	5月	6月	7月	8月	9月	10月	11月	12月	1月
東京港	輸出	前年比 87%	95%	100%	102%	99%	85%	81%	77%	100%	92%	98%	98%	97%
	19年比	89%	85%	95%	92%	107%	78%	82%	84%	87%	101%	89%	90%	86%
横浜港	輸出	前年比 93%	91%	100%	95%	94%	85%	84%	89%	94%	88%	99%	91%	97%
	19年比	88%	91%	98%	92%	98%	92%	86%	93%	91%	91%	90%	91%	86%
名古屋港	輸出	前年比 99%	99%	102%	98%	111%	102%	96%	95%	109%	103%	103%	106%	101%
	19年比	95%	96%	96%	94%	102%	94%	97%	96%	110%	113%	97%	109%	96%
大阪港	輸出	前年比 97%	82%	124%	102%	108%	101%	101%	102%	102%	103%	111%	105%	100%
	19年比	87%	95%	93%	97%	92%	100%	99%	103%	98%	115%	101%	116%	87%
神戸港	輸出	前年比 85%	101%	99%	100%	96%	100%	100%	93%	114%	100%	106%	106%	108%
	19年比	89%	92%	94%	92%	90%	92%	90%	95%	104%	101%	102%	102%	96%
5大港計	輸出	前年比 87%	90%	103%	102%	99%	94%	101%	99%	111%	105%	108%	105%	103%
	19年比	86%	94%	94%	96%	83%	92%	93%	98%	108%	105%	102%	103%	88%
東京港	輸入	前年比 86%	94%	106%	109%	104%	85%	88%	79%	96%	88%	88%	104%	97%
	19年比	96%	96%	100%	99%	100%	90%	90%	95%	92%	96%	93%	95%	93%
横浜港	輸入	前年比 90%	94%	97%	99%	98%	83%	90%	85%	98%	90%	94%	97%	103%
	19年比	90%	92%	96%	88%	93%	97%	83%	92%	96%	88%	96%	86%	93%
名古屋港	輸入	前年比 100%	103%	109%	95%	99%	90%	92%	85%	110%	87%	94%	98%	90%
	19年比	102%	97%	108%	100%	96%	93%	92%	95%	112%	96%	99%	100%	91%
大阪港	輸入	前年比 100%	114%	111%	96%	99%	86%	96%	90%	106%	91%	96%	92%	88%
	19年比	99%	113%	113%	96%	94%	97%	94%	99%	119%	95%	106%	96%	87%
神戸港	輸入	前年比 91%	98%	103%	101%	101%	92%	91%	85%	106%	94%	98%	102%	98%
	19年比	93%	92%	98%	94%	99%	88%	89%	92%	99%	102%	95%	98%	92%
5大港計	輸入	前年比 93%	93%	106%	99%	99%	89%	92%	92%	101%	94%	101%	97%	98%
	19年比	89%	95%	98%	93%	93%	95%	90%	96%	100%	98%	98%	97%	88%

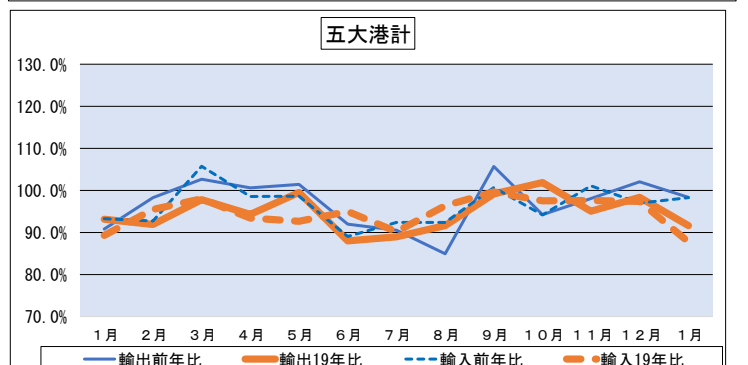
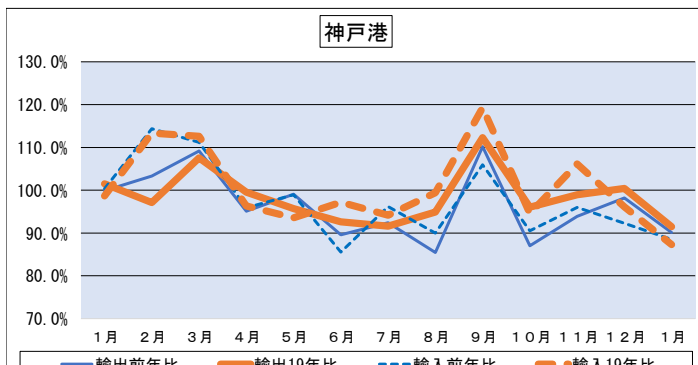
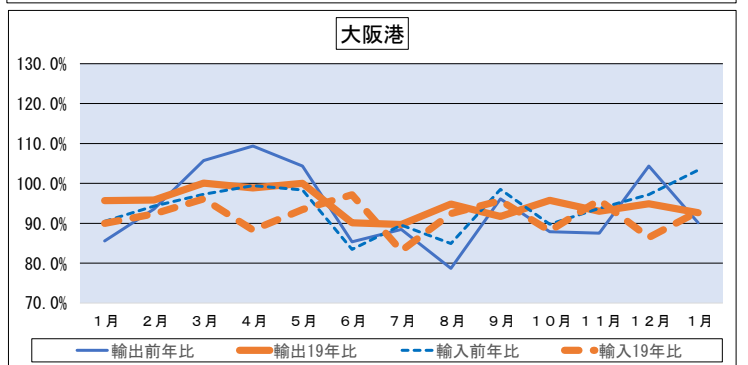
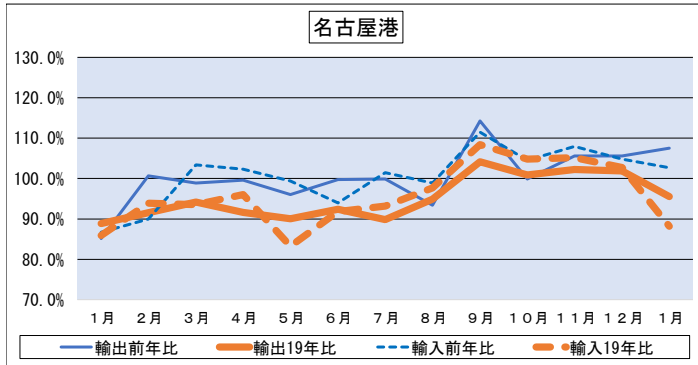
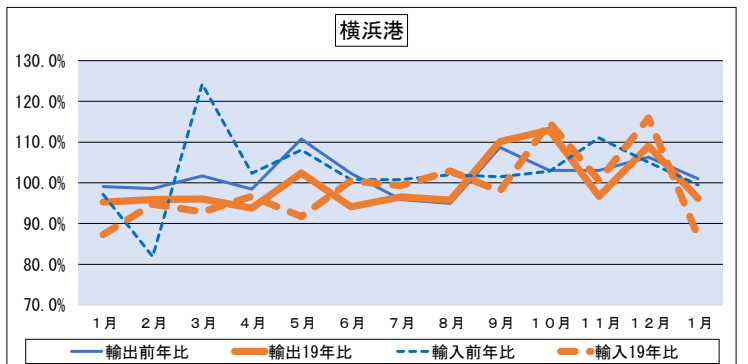
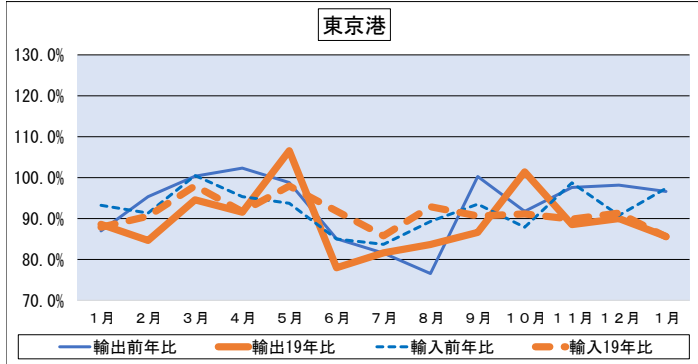


図1-7 主要5大港コンテナ統計 輸出 実入り・空 前年同月比・19年同月比

		2023年												2024年
		1月	2月	3月	4月	5月	6月	7月	8月	9月	10月	11月	12月	1月
東京港	実入	前年比 98%	110%	96%	97%	95%	92%	95%	95%	115%	95%	120%	111%	100%
	19年比	95%	100%	98%	90%	100%	85%	90%	96%	92%	114%	103%	97%	96%
横浜港	実入	前年比 100%	104%	104%	99%	115%	110%	107%	112%	122%	114%	112%	109%	115%
	19年比	94%	96%	92%	90%	101%	96%	99%	99%	111%	114%	101%	107%	108%
名古屋港	実入	前年比 86%	102%	97%	96%	95%	106%	105%	105%	115%	103%	111%	108%	112%
	19年比	84%	88%	88%	87%	84%	92%	89%	94%	103%	98%	101%	97%	94%
大阪港	実入	前年比 92%	93%	94%	98%	102%	92%	104%	96%	109%	98%	96%	104%	116%
	19年比	93%	91%	91%	94%	96%	91%	96%	89%	99%	104%	99%	97%	108%
神戸港	実入	前年比 97%	104%	93%	93%	99%	96%	100%	93%	119%	92%	100%	101%	104%
	19年比	93%	91%	89%	95%	93%	94%	92%	93%	109%	93%	95%	95%	97%
5大港計	実入	前年比 94%	103%	97%	97%	101%	100%	102%	101%	117%	101%	109%	107%	109%
	19年比	91%	93%	91%	91%	94%	92%	93%	95%	103%	105%	100%	99%	99%
	空	前年比 87%	89%	114%	108%	102%	80%	74%	66%	90%	83%	82%	94%	86%
	19年比	95%	89%	111%	101%	109%	82%	82%	86%	93%	87%	87%	97%	82%

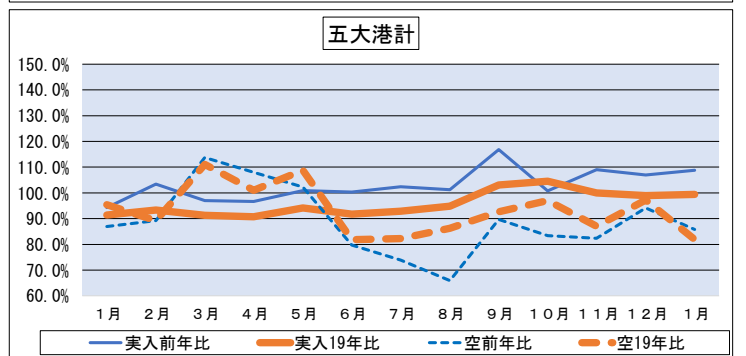
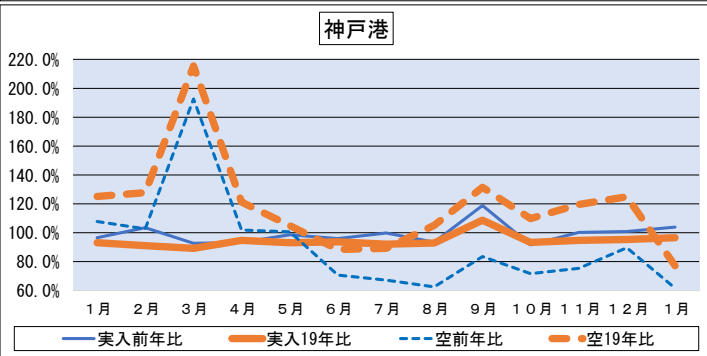
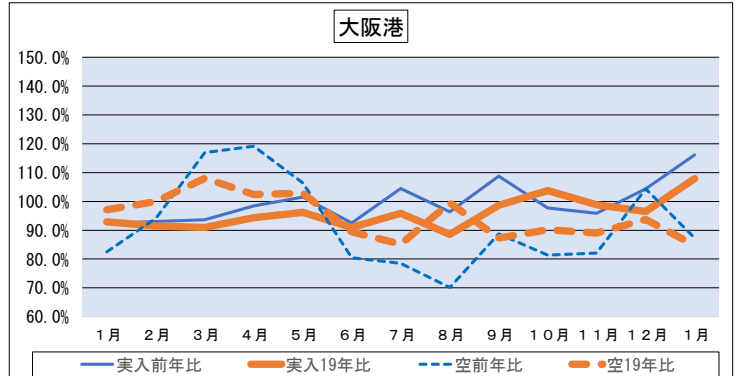
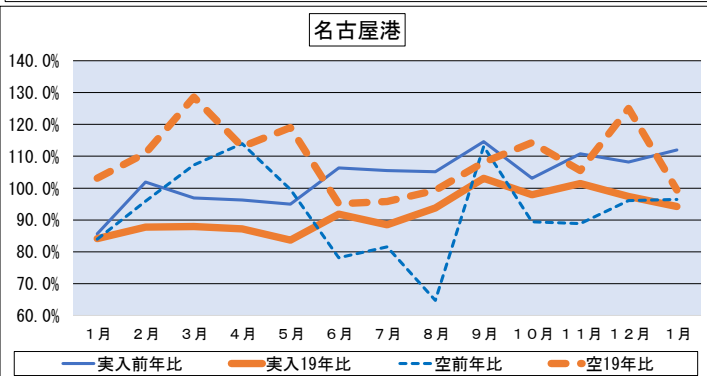
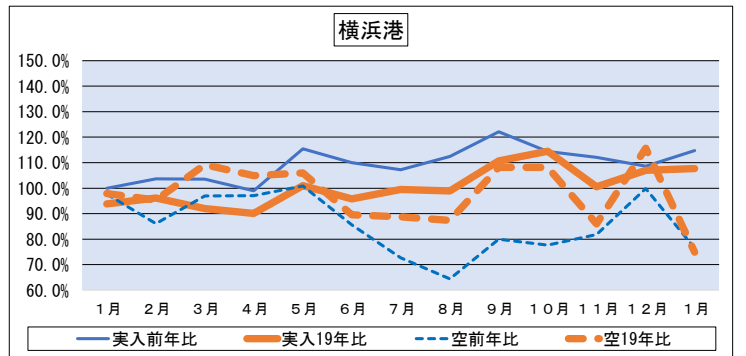
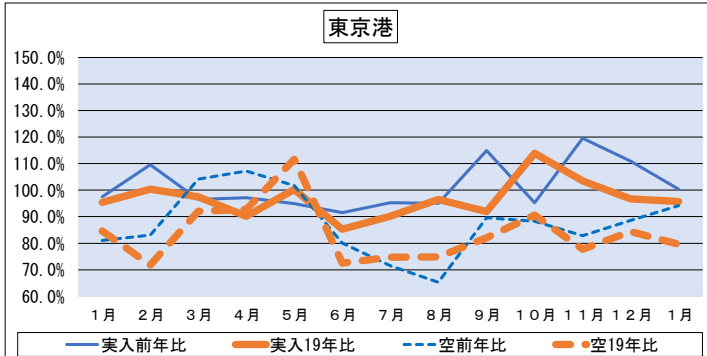


図1-8 主要5大港コンテナ統計 輸入 実入り・空 前年同月比・19年同月比

		2023年												2024年
		1月	2月	3月	4月	5月	6月	7月	8月	9月	10月	11月	12月	1月
東京港	実入	前年比 93%	88%	100%	94%	93%	84%	83%	89%	92%	90%	94%	86%	97%
	19年比	88%	87%	97%	90%	97%	91%	85%	92%	89%	88%	86%	87%	85%
横浜港	実入	前年比 107%	1107%	541%	358%	397%	342%	519%	205%	580%	1180%	1757%	873%	196%
	19年比	97%	78%	115%	92%	101%	88%	86%	93%	98%	94%	105%	97%	99%
名古屋港	実入	前年比 89%	91%	99%	97%	95%	89%	93%	90%	102%	95%	102%	99%	98%
	19年比	88%	96%	94%	96%	86%	92%	90%	93%	103%	100%	100%	97%	86%
大阪港	実入	前年比 90%	93%	96%	97%	97%	81%	87%	83%	97%	88%	93%	98%	102%
	19年比	91%	94%	97%	89%	93%	97%	82%	91%	96%	87%	94%	86%	93%
神戸港	実入	前年比 91%	98%	101%	94%	99%	87%	90%	88%	109%	88%	96%	94%	94%
	19年比	89%	95%	98%	91%	92%	96%	86%	94%	117%	89%	99%	89%	84%
5大港計	実入	前年比 92%	89%	101%	95%	96%	85%	87%	89%	98%	91%	97%	93%	98%
	19年比	90%	93%	96%	92%	93%	93%	86%	94%	97%	93%	93%	92%	88%
	空	前年比 128%	172%	191%	197%	208%	212%	307%	219%	165%	143%	170%	150%	107%
	19年比	81%	135%	125%	124%	89%	123%	168%	165%	146%	203%	221%	219%	87%

