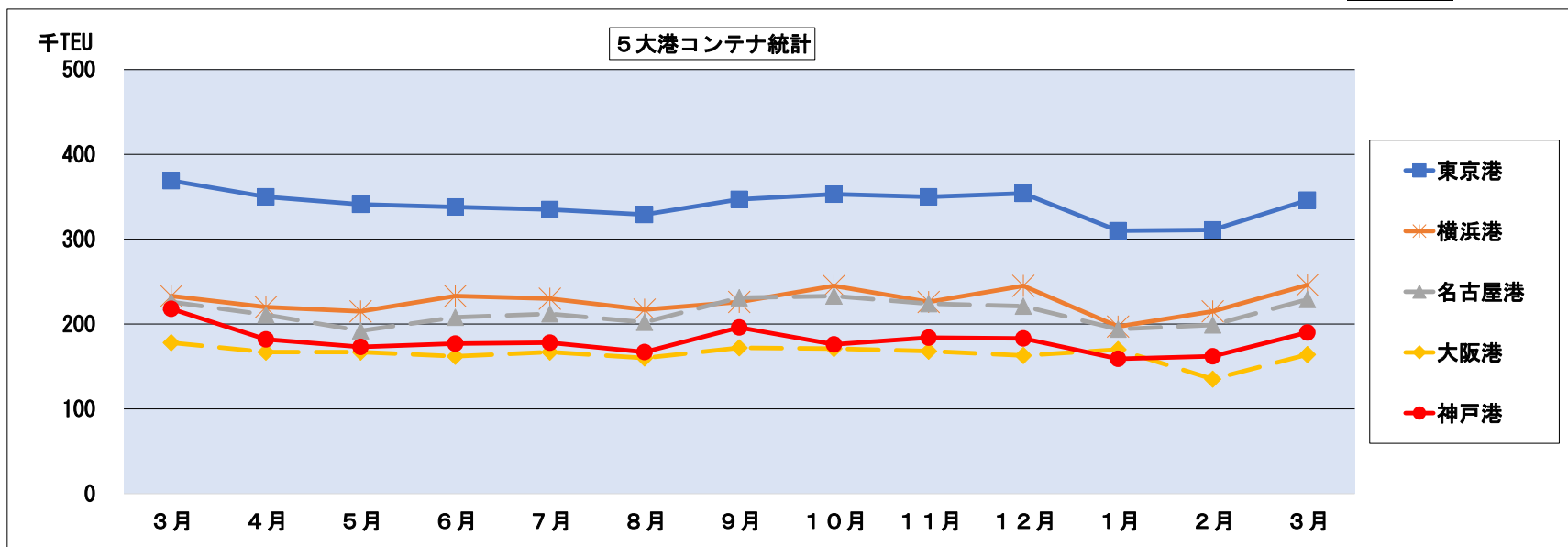


図 1-1 主要5大港コンテナ統計

2024年 3月

(単位:TEU)

	2023年											2024年			2023/4~ 2024/3 計
	3月	4月	5月	6月	7月	8月	9月	10月	11月	12月	1月	2月	3月		
東京港	368,657	350,172	340,633	338,229	334,920	328,681	346,840	352,680	350,475	353,816	310,038	310,920	345,796	4,063,200	
前年同期	367,073	355,309	354,952	398,000	405,133	395,020	359,073	393,065	357,001	375,038	319,496	297,877	368,657	4,378,621	
前年同期比	100.4%	98.6%	96.0%	85.0%	82.7%	83.2%	96.6%	89.7%	98.2%	94.3%	97.0%	104.4%	93.8%	92.8%	
横浜港	233,197	220,057	214,920	232,954	230,068	216,913	226,022	245,031	226,214	245,142	196,949	215,392	246,251	2,715,913	
前年同期	209,533	219,583	196,359	229,248	234,373	220,763	214,702	238,035	212,003	231,886	196,407	199,507	233,197	2,626,063	
前年同期比	111.3%	100.2%	109.5%	101.6%	98.2%	98.3%	105.3%	102.9%	106.7%	105.7%	100.3%	108.0%	105.6%	103.4%	
名古屋港	225,750	210,818	192,007	207,765	211,562	202,260	230,739	232,938	223,702	220,681	194,028	198,512	229,336	2,554,348	
前年同期	223,539	209,042	196,642	214,161	210,243	210,580	204,357	228,306	209,695	209,774	184,770	191,133	225,750	2,494,453	
前年同期比	101.0%	100.8%	97.6%	97.0%	100.6%	96.0%	112.9%	102.0%	106.7%	105.2%	105.0%	103.9%	101.6%	102.4%	
大阪港	178,010	167,299	166,672	161,732	166,928	160,371	172,495	170,727	168,499	163,082	170,264	134,659	163,633	1,966,361	
前年同期	176,293	160,805	164,952	191,746	187,468	195,568	177,128	192,098	185,544	162,054	169,403	136,155	178,010	2,100,931	
前年同期比	101.0%	104.0%	101.0%	84.3%	89.0%	82.0%	97.4%	88.9%	90.8%	100.6%	100.5%	98.9%	91.9%	93.6%	
神戸港	218,314	182,225	173,242	176,906	178,017	167,094	195,916	176,119	183,991	182,504	159,429	162,438	189,797	2,127,678	
前年同期	198,237	190,854	174,946	201,625	189,044	190,698	181,147	198,825	193,884	191,088	178,521	178,204	218,314	2,287,150	
前年同期比	110.1%	95.5%	99.0%	87.7%	94.2%	87.6%	108.2%	88.6%	94.9%	95.5%	89.3%	91.2%	86.9%	93.0%	
5大港計	1,223,928	1,130,571	1,087,474	1,117,586	1,121,495	1,075,319	1,172,012	1,177,495	1,152,881	1,165,225	1,030,708	1,021,921	1,174,813	13,427,500	
前年同期	1,174,675	1,135,593	1,087,851	1,234,780	1,226,261	1,212,629	1,136,407	1,250,329	1,158,127	1,169,840	1,048,597	1,002,876	1,223,928	13,887,218	
前年同期比	104.2%	99.6%	100.0%	90.5%	91.5%	88.7%	103.1%	94.2%	99.5%	99.6%	98.3%	101.9%	96.0%	96.7%	



* 補足 2024年4月の東京港の外貿コンテナ取扱個数(最速報値)は35.7万TEU

	総計 TEU	輸出 TEU	輸入 TEU
2024年4月 最速報値	356,652	160,484	196,168
2023年4月 速報値	350,172	168,050	182,122
比率(%)	101.9%	95.5%	107.7%

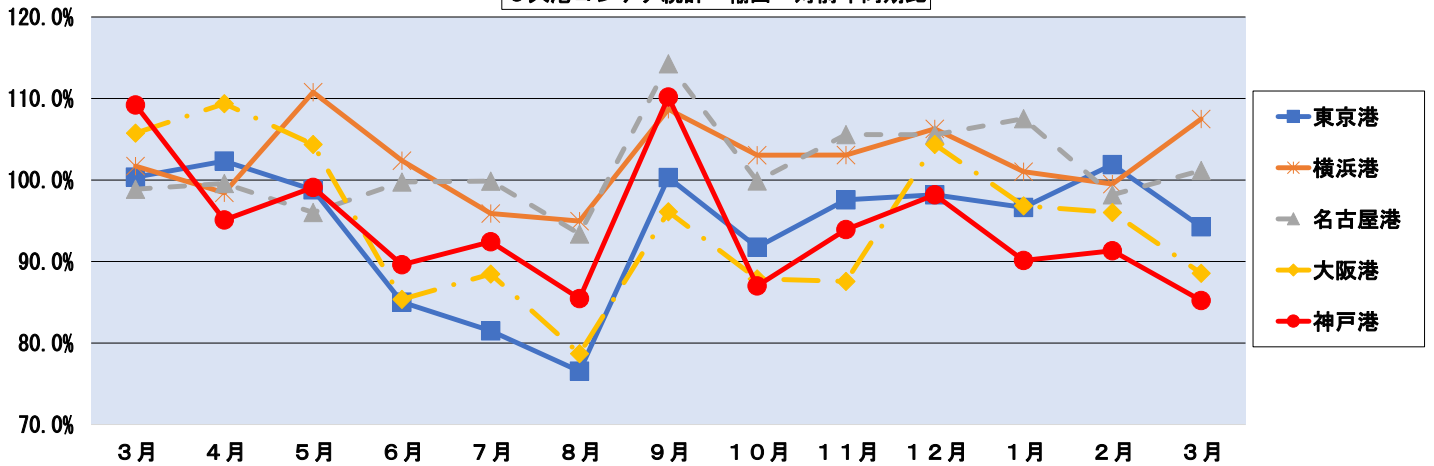
図1-2 主要5大港コンテナ統計 輸出・輸入別

2024年3月

(単位: TEU)

	2023年												2024年			2023/4~ 2024/3 計
	3月	4月	5月	6月	7月	8月	9月	10月	11月	12月	1月	2月	3月			
東京港	輸出	164,622	168,050	154,772	156,200	152,887	143,863	163,705	170,792	163,402	177,869	134,816	145,715	155,179	1,887,250	
	前年同期	164,050	164,245	156,660	183,725	187,602	187,963	163,222	186,140	167,463	181,173	139,506	143,013	164,622		2,025,334
	前年同期比	100.3%	102.3%	98.8%	85.0%	81.5%	76.5%	100.3%	91.8%	97.6%	98.2%	96.6%	101.9%	94.3%		93.2%
	輸入	204,035	182,122	185,861	182,029	182,033	184,818	183,135	181,888	187,073	175,947	175,222	165,205	190,617		2,175,950
横浜港	輸出	122,471	117,422	112,623	124,326	120,160	111,599	122,535	131,521	118,859	133,141	99,968	112,709	131,642	1,436,505	
	前年同期	120,419	119,296	101,670	121,444	125,320	117,525	112,745	127,631	115,322	125,272	98,962	113,267	122,471		1,400,925
	前年同期比	101.7%	98.4%	110.8%	102.4%	95.9%	95.0%	108.7%	103.0%	103.1%	106.3%	101.0%	99.5%	107.5%		102.5%
	輸入	110,726	102,634	102,297	108,627	109,908	105,314	103,487	113,510	107,355	112,002	96,981	102,683	114,609		1,279,407
名古屋港	輸出	116,570	112,094	98,303	111,844	108,380	101,284	120,063	122,232	116,851	121,038	95,689	103,874	117,923	1,329,575	
	前年同期	117,910	112,574	102,383	112,109	108,531	108,459	105,078	122,376	110,686	114,669	88,994	105,788	116,570		1,308,217
	前年同期比	98.9%	99.6%	96.0%	99.8%	99.9%	93.4%	114.3%	99.9%	105.6%	105.6%	107.5%	98.2%	101.2%		101.6%
	輸入	109,180	98,725	93,704	95,921	103,182	100,976	110,676	110,707	106,852	99,643	98,340	94,638	111,413		1,224,777
大阪港	輸出	81,240	81,256	76,547	76,192	75,589	71,965	79,085	80,640	76,407	81,367	71,266	62,891	71,950	905,155	
	前年同期	76,821	74,298	73,346	89,252	85,437	91,449	82,291	91,762	87,265	77,971	73,593	65,501	81,240		973,405
	前年同期比	105.8%	109.4%	104.4%	85.4%	88.5%	78.7%	96.1%	87.9%	87.6%	104.4%	96.8%	96.0%	88.6%		93.0%
	輸入	96,770	86,044	90,125	85,540	91,340	88,406	93,410	90,087	92,093	81,715	98,999	71,768	91,684		1,061,211
神戸港	輸出	116,268	99,208	90,452	97,729	92,812	85,458	104,806	95,134	96,220	102,612	80,675	88,717	99,076	1,132,899	
	前年同期	106,475	104,324	91,289	109,076	100,427	100,004	95,118	109,347	102,445	104,512	89,518	97,143	116,268		1,219,471
	前年同期比	109.2%	95.1%	99.1%	89.6%	92.4%	85.5%	110.2%	87.0%	93.9%	98.2%	90.1%	91.3%	85.2%		92.9%
	輸入	102,046	83,017	82,790	79,177	85,205	81,636	91,110	80,985	87,771	79,892	78,754	73,721	90,721		994,779
5大港計	輸出	601,171	578,030	532,697	566,291	549,828	514,169	590,194	600,319	571,739	616,027	482,414	513,906	575,770	6,691,384	
	前年同期	585,675	574,737	525,348	615,606	607,317	605,400	558,454	637,256	583,181	603,597	490,573	524,712	601,171		6,927,352
	前年同期比	102.6%	100.6%	101.4%	92.0%	90.5%	84.9%	105.7%	94.2%	98.0%	102.1%	98.3%	97.9%	95.8%		96.6%
	輸入	622,757	552,542	554,777	551,294	571,668	561,150	581,818	577,177	581,144	549,199	548,296	508,015	599,044		6,736,124
前年同期	589,001	560,856	562,501	619,173	618,945	607,229	577,953	613,074	574,946	566,243	558,024	478,164	622,757	6,959,865		
前年同期比	105.7%	98.5%	98.6%	89.0%	92.4%	92.4%	100.7%	94.1%	101.1%	97.0%	98.3%	106.2%	96.2%	96.8%		

5大港コンテナ統計 輸出 対前年同期比



5大港コンテナ統計 輸入 対前年同期比

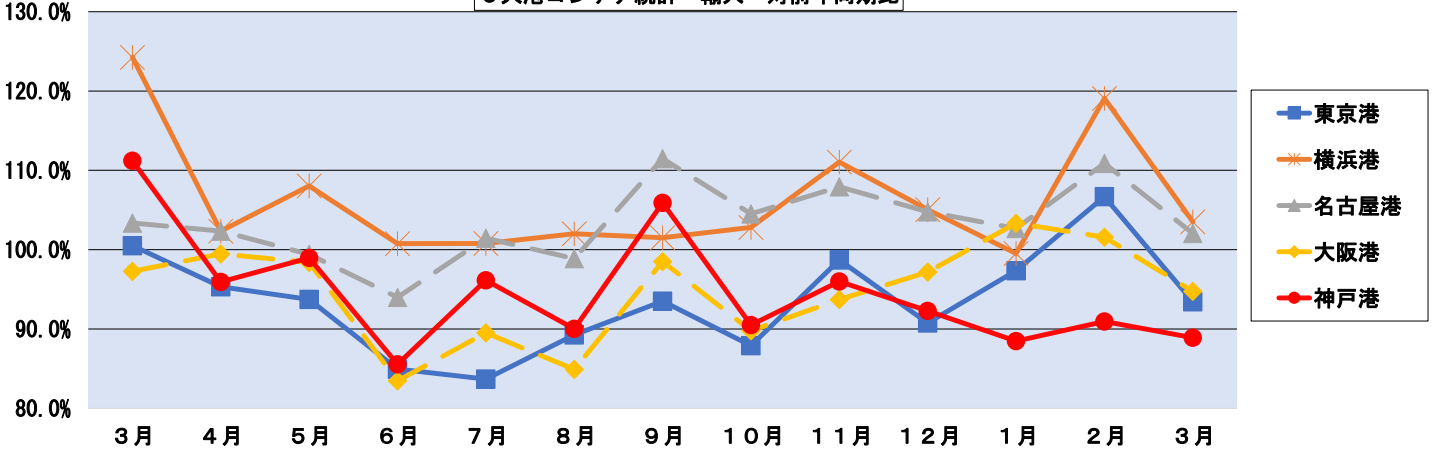


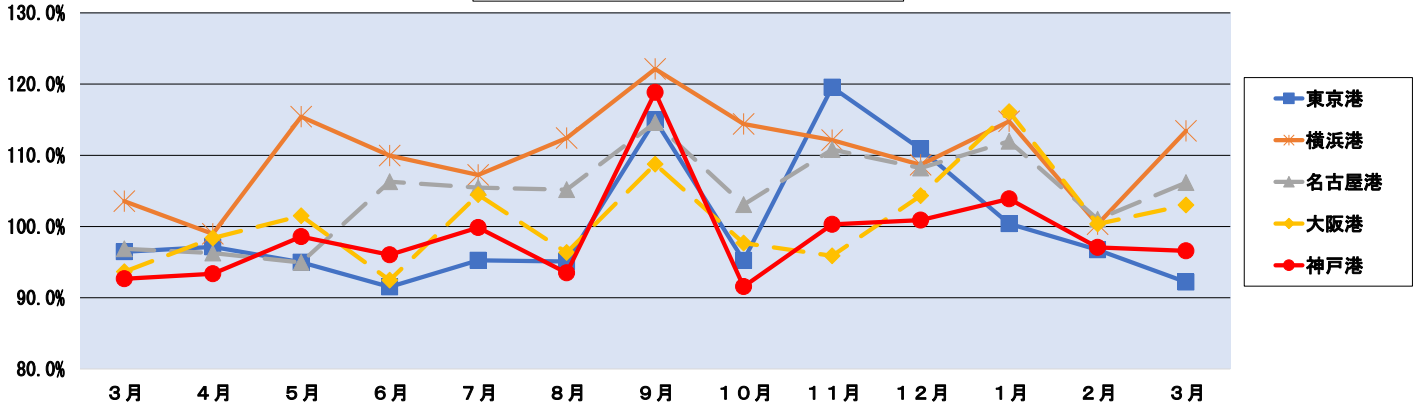
図1-3 主要5港コンテナ統計 輸出 実入・空別

2024年 3月

(単位:TEU)

	2023年											2024年			2023/4~ 2024/3 計
	3月	4月	5月	6月	7月	8月	9月	10月	11月	12月	1月	2月	3月		
東京港	実入	77,935	77,480	64,613	73,111	74,907	67,474	79,318	88,744	80,239	86,555	56,064	73,536	71,860	893,901
	前年同期	80,801	79,767	68,027	79,883	78,643	70,956	69,003	93,190	67,109	78,062	55,848	76,025	77,935	894,448
	前年同期比	96.5%	97.1%	95.0%	91.5%	95.2%	95.1%	114.9%	95.2%	119.6%	110.9%	100.4%	96.7%	92.2%	99.9%
	空	86,687	90,570	90,159	83,089	77,980	76,389	84,387	82,048	83,163	91,314	78,752	72,179	83,319	993,349
横浜港	実入	83,249	84,478	88,633	103,842	108,959	117,007	94,219	92,950	100,354	103,111	83,658	66,988	86,687	1,130,886
	前年同期	83,094	32,576	32,820	32,479	30,003	27,562	28,718	30,684	28,220	33,583	27,225	27,915	30,256	362,041
	前年同期比	104.1%	107.2%	101.7%	80.0%	71.6%	65.3%	89.6%	88.3%	82.9%	88.6%	94.1%	107.7%	96.1%	87.8%
	空	34,116	33,567	32,535	37,919	41,248	42,777	35,923	39,488	34,488	33,652	35,589	28,745	33,094	429,025
名古屋港	実入	89,377	84,846	79,804	91,848	90,157	84,038	93,817	100,837	90,639	99,558	72,743	84,794	101,386	1,074,467
	前年同期	86,303	85,729	69,135	83,525	84,072	74,748	76,822	88,143	80,834	91,620	63,373	84,523	89,377	971,901
	前年同期比	103.6%	99.0%	115.4%	110.0%	107.2%	112.4%	122.1%	114.4%	112.1%	108.7%	114.8%	100.3%	113.4%	110.6%
	空	33,094	32,576	32,820	32,479	30,003	27,562	28,718	30,684	28,220	33,583	27,225	27,915	30,256	362,041
大阪港	実入	34,557	34,414	31,095	33,925	34,281	28,769	32,834	35,842	32,999	35,401	28,311	30,834	35,600	394,905
	前年同期	36,902	34,978	30,635	36,690	32,814	29,858	30,190	36,695	34,415	33,933	24,379	30,723	34,557	389,867
	前年同期比	93.6%	98.4%	101.5%	92.5%	104.5%	96.4%	108.8%	97.7%	95.9%	104.3%	116.1%	100.4%	103.0%	101.1%
	空	46,683	46,842	45,452	42,267	41,308	43,197	46,251	44,798	43,408	45,966	42,955	32,057	36,350	510,851
神戸港	実入	39,919	39,321	42,711	52,562	52,623	61,591	52,101	55,067	52,850	44,038	49,214	34,778	46,683	583,539
	前年同期	39,919	39,321	42,711	52,562	52,623	61,591	52,101	55,067	52,850	44,038	49,214	34,778	46,683	583,539
	前年同期比	116.9%	119.1%	106.4%	80.4%	78.5%	70.1%	88.8%	81.4%	82.1%	104.4%	87.3%	92.2%	77.9%	87.5%
	空	82,348	77,533	68,729	78,237	77,381	69,207	85,394	77,037	76,556	80,261	62,711	73,644	79,535	906,225
5大港計	実入	88,862	83,048	69,721	81,479	77,490	74,024	71,854	84,132	76,328	79,547	60,371	75,874	82,348	916,216
	前年同期	92,771	93,471	98,671	96,071	99,971	93,571	118,871	91,671	100,371	100,971	103,971	97,171	96,671	98,971
	前年同期比	94.7%	88.8%	70.6%	84.8%	77.5%	81.4%	77.5%	92.5%	75.3%	78.5%	58.3%	78.3%	97.7%	97.7%
	空	17,613	21,276	21,568	27,597	22,937	25,980	23,264	25,215	26,117	24,965	29,147	21,269	33,920	303,255
5大港計	実入	376,482	362,496	319,099	368,601	364,353	330,298	384,777	399,089	373,858	398,706	290,953	348,433	386,335	4,326,998
	前年同期	388,110	375,151	316,360	367,637	356,099	326,420	329,389	395,904	342,999	372,740	267,487	351,901	376,482	4,178,569
	前年同期比	97.0%	96.6%	100.9%	100.3%	102.3%	101.2%	116.8%	100.8%	109.0%	107.0%	108.8%	99.0%	102.6%	103.6%
	空	224,689	215,534	213,599	197,691	185,475	183,873	205,417	201,230	197,881	217,321	191,461	165,473	189,435	2,364,390
5大港計	実入	197,565	199,587	208,988	247,969	251,218	278,980	229,065	241,352	240,182	230,857	223,086	172,812	224,689	2,748,785
	前年同期	197,565	199,587	208,988	247,969	251,218	278,980	229,065	241,352	240,182	230,857	223,086	172,812	224,689	2,748,785
	前年同期比	113.7%	108.0%	102.2%	79.7%	73.8%	65.9%	89.7%	83.4%	82.4%	94.1%	85.8%	95.8%	84.3%	86.0%

5大港コンテナ統計 輸出 実入 対前年同期比



5大港コンテナ統計 輸出 空 対前年同期比

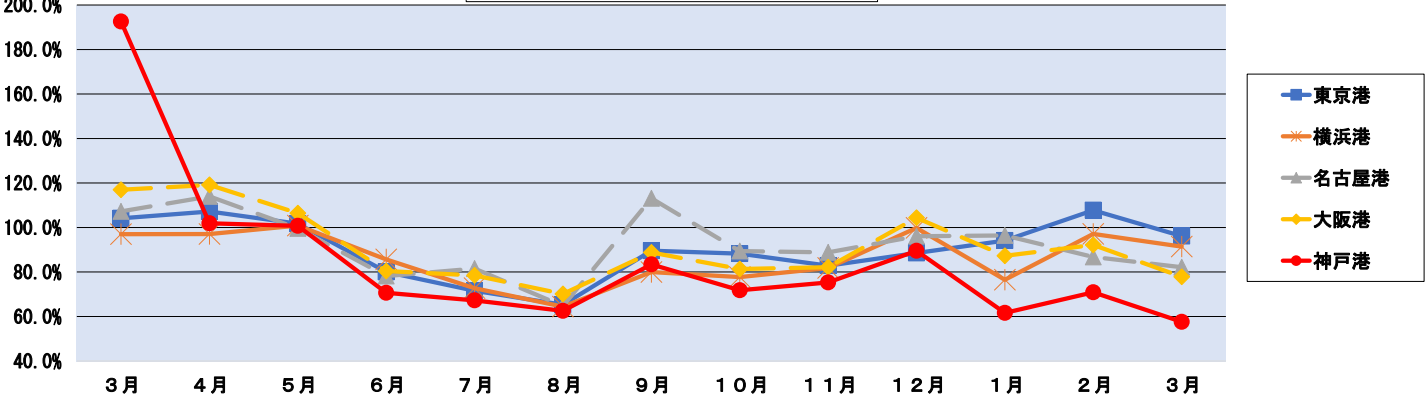


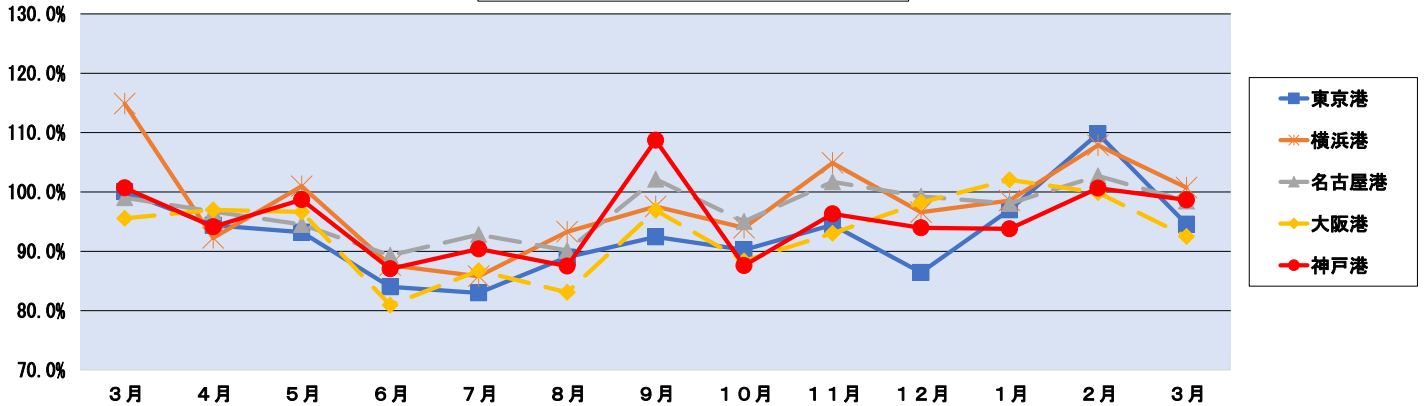
図1-4 主要5港コンテナ統計 輸入 実入・空別

2024年 3月

(単位:TEU)

	2023年												2024年			2023/4~ 2024/3 計
	3月	4月	5月	6月	7月	8月	9月	10月	11月	12月	1月	2月	3月			
東京港	実入	200,474	178,740	183,591	178,911	179,409	183,469	178,800	175,246	177,689	166,061	173,801	163,115	189,570	2,128,402	
	前年同期	200,387	189,362	196,910	212,952	216,179	206,078	193,450	194,178	188,108	192,126	179,210	148,541	200,474	2,317,568	
	前年同期比	100.0%	94.4%	93.2%	84.0%	83.0%	89.0%	92.4%	90.3%	94.5%	86.4%	97.0%	109.8%	94.6%	91.8%	
	空	3,561	3,382	2,270	3,118	2,624	1,349	4,335	6,642	9,384	9,886	1,421	2,090	1,047	47,548	
横浜港	実入	95,911	88,594	93,079	92,716	91,294	92,585	93,608	95,743	94,076	93,234	92,829	84,787	96,606	1,109,151	
	前年同期	83,489	96,024	92,188	105,774	106,405	99,253	95,942	101,895	89,689	96,523	94,198	78,591	95,911	1,152,393	
	前年同期比	114.9%	92.3%	101.0%	87.7%	85.8%	93.3%	97.6%	94.0%	104.9%	96.6%	98.5%	107.9%	100.7%	96.2%	
	空	14,815	14,040	9,218	15,912	18,615	12,729	9,879	17,767	13,279	18,768	4,152	17,896	18,003	170,258	
名古屋港	実入	96,725	88,056	87,088	86,397	90,946	88,789	96,147	95,993	94,088	86,465	90,163	78,335	95,243	1,077,710	
	前年同期	97,675	91,056	92,135	96,730	97,990	98,491	94,109	101,014	92,519	87,123	91,950	76,268	96,725	1,116,110	
	前年同期比	99.0%	96.7%	94.5%	89.3%	92.8%	90.1%	102.2%	95.0%	101.7%	99.2%	98.1%	102.7%	98.5%	96.6%	
	空	12,455	10,669	6,616	9,524	12,236	12,187	14,529	14,714	12,764	13,178	8,177	16,303	16,170	147,067	
大阪港	実入	93,444	83,132	87,715	82,138	87,378	85,204	91,121	86,849	88,591	79,471	96,466	68,581	86,426	1,023,072	
	前年同期	97,783	85,723	90,770	101,473	100,744	102,538	94,029	98,274	95,233	80,902	94,536	68,651	93,444	1,106,317	
	前年同期比	95.6%	97.0%	96.6%	80.9%	86.7%	83.1%	96.9%	88.4%	93.0%	98.2%	102.0%	99.9%	92.5%	92.5%	
	空	3,326	2,912	2,410	3,402	3,962	3,202	2,289	3,238	3,502	2,244	2,533	3,187	5,258	38,139	
神戸港	実入	81,834	73,521	76,676	73,526	73,909	73,137	84,065	71,315	77,494	67,615	71,127	63,016	80,746	886,147	
	前年同期	81,268	78,108	77,687	84,467	81,754	83,571	77,324	81,408	80,462	71,961	75,845	62,610	81,834	937,031	
	前年同期比	100.7%	94.1%	98.7%	87.0%	90.4%	87.5%	108.7%	87.6%	96.3%	94.0%	93.8%	100.6%	98.7%	94.6%	
	空	20,212	9,496	6,114	5,651	11,296	8,499	7,045	9,670	10,277	12,277	7,627	10,705	9,975	108,632	
5大港計	実入	568,388	512,043	528,149	513,688	522,936	523,184	543,741	525,146	531,938	492,846	524,386	457,834	548,591	6,224,482	
	前年同期	560,602	540,273	549,690	601,396	603,072	589,931	554,854	576,769	546,011	528,635	535,739	434,661	568,388	6,629,419	
	前年同期比	101.4%	94.8%	96.1%	85.4%	86.7%	88.7%	98.0%	91.0%	97.4%	93.2%	97.9%	105.3%	96.5%	93.9%	
	空	54,369	40,499	26,628	37,607	48,733	37,966	38,077	52,031	49,206	56,353	23,910	50,181	50,453	511,644	
前年同期	28,399	20,583	12,811	17,777	15,873	17,298	23,099	36,305	28,935	37,608	22,286	43,503	54,369	330,447		
前年同期比	191.4%	196.8%	207.9%	211.5%	307.0%	219.5%	164.8%	143.3%	170.1%	149.8%	107.3%	115.4%	92.8%	154.8%		

5大港コンテナ統計 輸入 実入 対前年同期比



5大港コンテナ統計 輸入 空 (TEU)

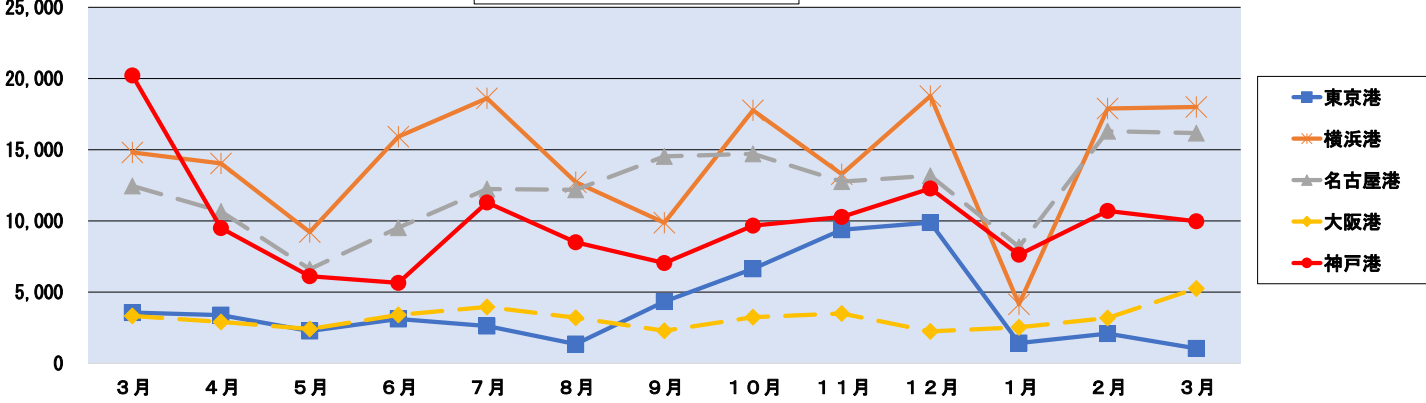


図1-5 主要5大港コンテナ統計 前年同月比・19年同月比

		2023年												2024年		
		3月	4月	5月	6月	7月	8月	9月	10月	11月	12月	1月	2月	3月		
東京港	前年比	100%	99%	96%	85%	83%	83%	97%	90%	98%	94%	97%	104%	94%		
	19年比	96%	92%	102%	85%	84%	89%	89%	96%	89%	91%	86%	91%	90%		
横浜港	前年比	111%	100%	109%	102%	98%	98%	105%	103%	107%	106%	100%	108%	106%		
	19年比	95%	95%	97%	97%	98%	99%	104%	114%	98%	112%	91%	103%	100%		
名古屋港	前年比	101%	101%	98%	97%	101%	96%	113%	102%	107%	105%	105%	104%	102%		
	19年比	94%	94%	87%	92%	91%	96%	106%	103%	104%	102%	92%	96%	95%		
大阪港	前年比	101%	104%	101%	84%	89%	82%	97%	89%	91%	101%	101%	99%	92%		
	19年比	98%	93%	96%	94%	86%	93%	94%	92%	95%	90%	93%	93%	90%		
神戸港	前年比	110%	95%	99%	88%	94%	88%	108%	89%	95%	96%	89%	91%	87%		
	19年比	110%	98%	95%	95%	93%	97%	115%	95%	102%	98%	89%	95%	96%		
5大港計	前年比	104%	100%	100%	91%	91%	89%	103%	94%	100%	100%	98%	102%	96%		
	19年比	98%	94%	96%	91%	90%	94%	99%	100%	96%	98%	90%	95%	94%		

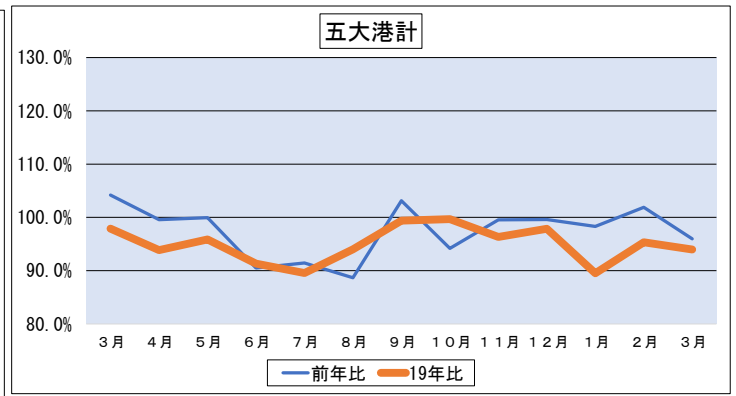
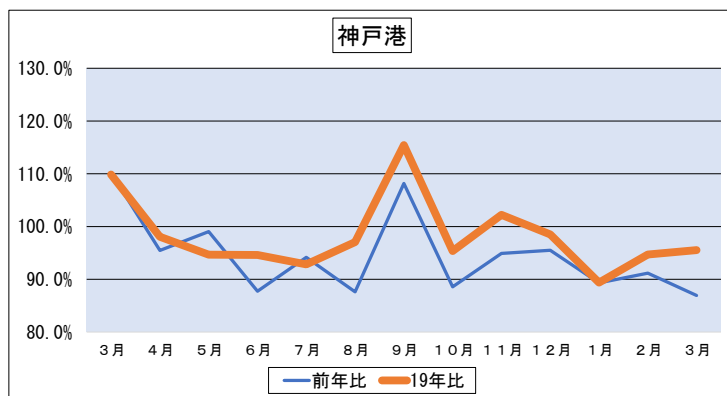
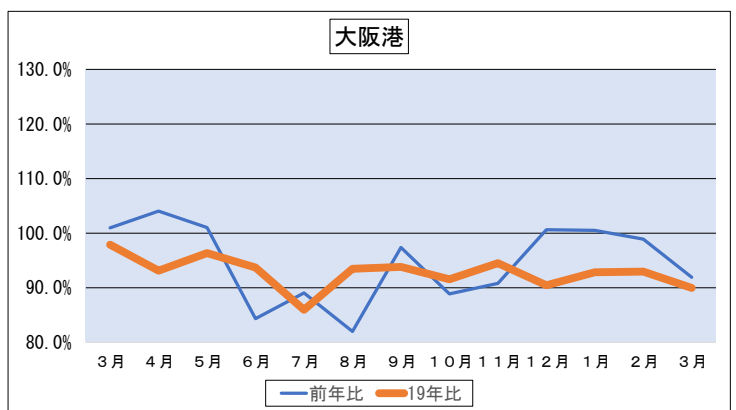
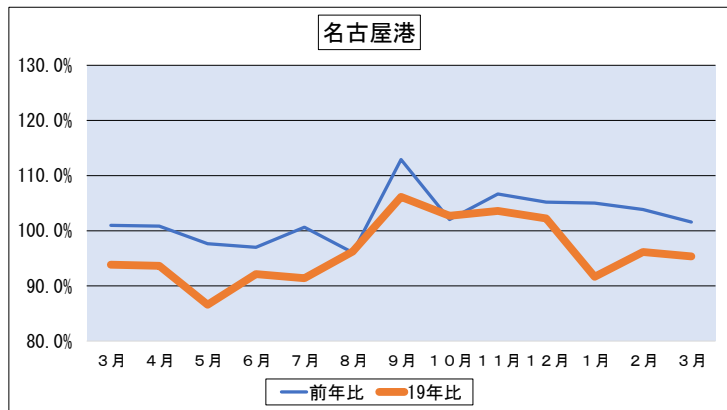
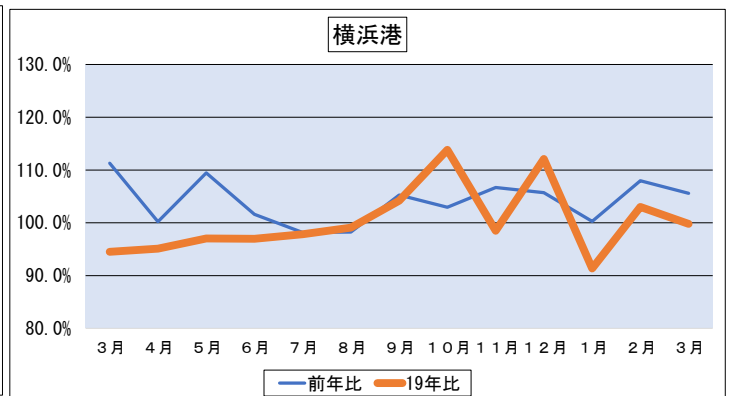
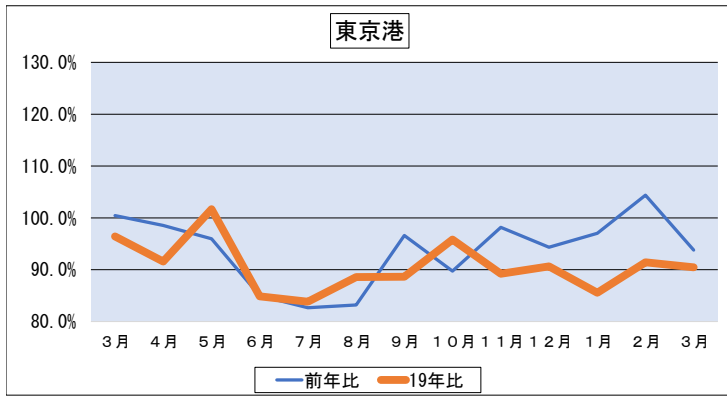


図1-6 主要5大港コンテナ統計 輸出・輸入 前年同月比・19年同月比

		2023年												2024年		
		3月	4月	5月	6月	7月	8月	9月	10月	11月	12月	1月	2月	3月		
東京港	輸出	前年比	100%	102%	99%	85%	81%	77%	100%	92%	98%	98%	97%	102%	94%	
	19年比	95%	92%	107%	78%	82%	87%	84%	87%	101%	89%	90%	86%	86%	89%	
横浜港	輸出	前年比	102%	98%	111%	102%	96%	95%	109%	103%	103%	106%	101%	100%	107%	
	19年比	96%	94%	102%	94%	97%	96%	110%	113%	97%	109%	96%	95%	103%	104%	
名古屋港	輸出	前年比	99%	100%	96%	100%	100%	93%	114%	100%	106%	106%	108%	98%	101%	
	19年比	94%	92%	90%	92%	90%	95%	104%	101%	102%	102%	96%	95%	103%	102%	
大阪港	輸出	前年比	106%	109%	104%	85%	88%	79%	96%	88%	88%	104%	97%	96%	89%	
	19年比	100%	99%	100%	90%	90%	95%	92%	96%	93%	95%	93%	92%	89%	89%	
神戸港	輸出	前年比	109%	95%	99%	90%	92%	85%	110%	87%	94%	98%	90%	91%	85%	
	19年比	108%	100%	96%	93%	92%	95%	112%	96%	99%	100%	91%	89%	92%	89%	
5大港計	輸出	前年比	103%	101%	101%	92%	91%	85%	106%	94%	98%	102%	98%	98%	96%	
	19年比	98%	94%	99%	88%	89%	92%	99%	102%	95%	98%	92%	90%	94%	96%	
	輸入	前年比	106%	99%	99%	89%	92%	92%	101%	94%	101%	97%	98%	106%	96%	
	19年比	98%	93%	93%	95%	90%	96%	100%	98%	98%	97%	88%	101%	94%	96%	

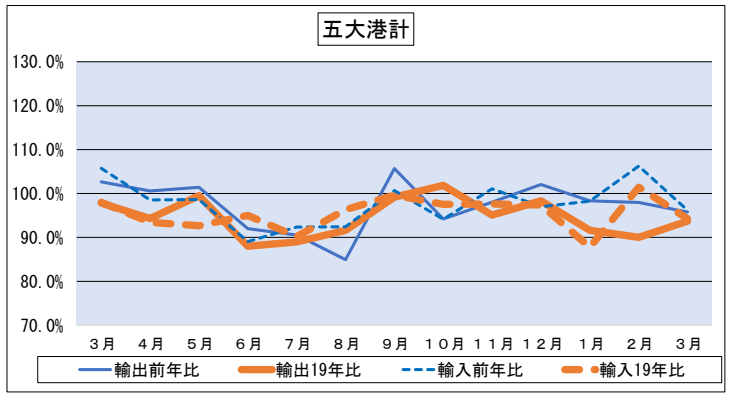
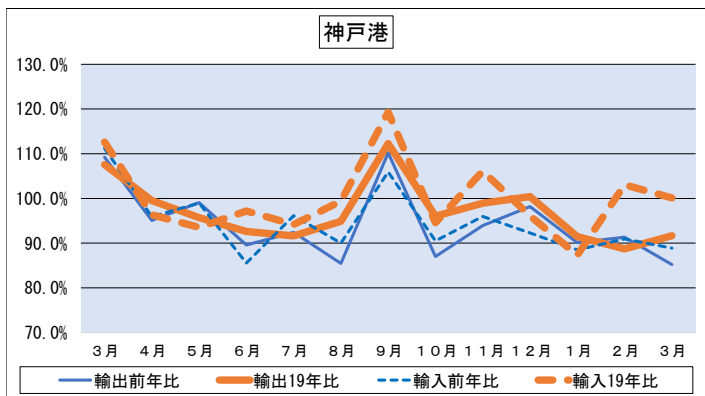
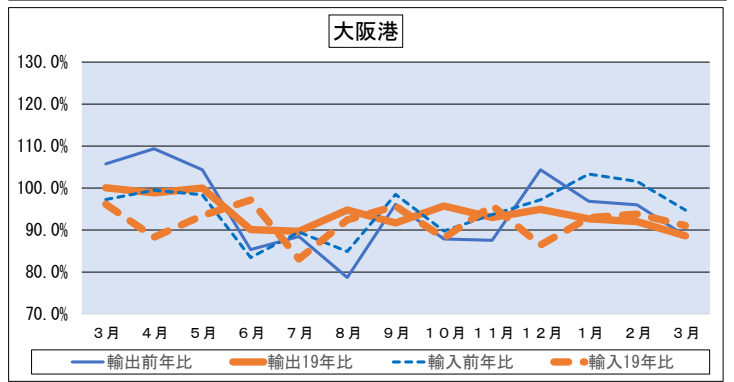
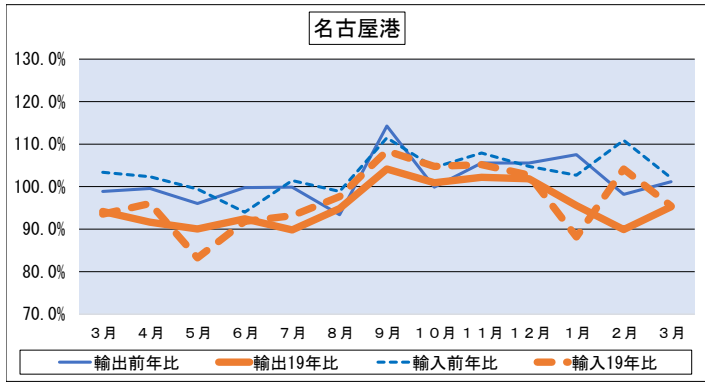
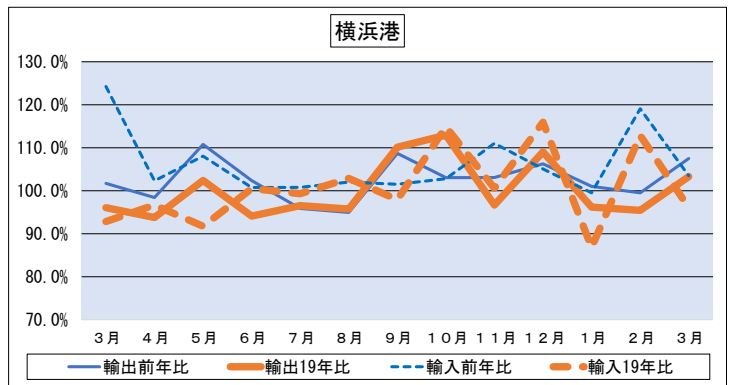
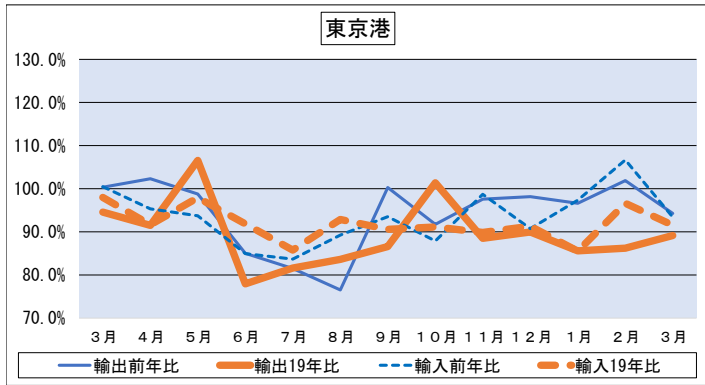


図1-7 主要5大港コンテナ統計 輸出 実入り・空 前年同月比・19年同月比

			2023年												2024年		
			3月	4月	5月	6月	7月	8月	9月	10月	11月	12月	1月	2月	3月		
東京港	実入り	前年比	96%	97%	95%	92%	95%	95%	115%	95%	120%	111%	100%	97%	92%		
		19年比	98%	90%	100%	85%	90%	96%	92%	114%	103%	97%	96%	97%	90%		
	空	前年比	104%	107%	102%	80%	72%	65%	90%	88%	83%	89%	94%	108%	96%		
横浜港	実入り	前年比	104%	99%	115%	110%	107%	112%	122%	114%	112%	109%	115%	100%	113%		
		19年比	92%	90%	101%	96%	99%	99%	111%	114%	101%	107%	108%	96%	104%		
	空	前年比	97%	97%	101%	86%	73%	64%	80%	78%	82%	100%	76%	97%	91%		
名古屋港	実入り	前年比	97%	96%	95%	106%	105%	105%	115%	103%	111%	108%	112%	101%	106%		
		19年比	88%	87%	84%	92%	89%	94%	103%	98%	101%	97%	94%	89%	93%		
	空	前年比	107%	114%	100%	78%	82%	65%	113%	89%	89%	96%	96%	87%	82%		
大阪港	実入り	前年比	129%	113%	119%	95%	96%	99%	108%	114%	106%	125%	99%	96%	106%		
		19年比	94%	98%	102%	92%	104%	96%	109%	98%	96%	104%	116%	100%	103%		
	空	前年比	91%	94%	96%	91%	96%	89%	99%	104%	99%	97%	108%	92%	94%		
神戸港	実入り	前年比	117%	119%	106%	80%	78%	70%	89%	81%	82%	104%	87%	92%	78%		
		19年比	108%	102%	103%	89%	85%	99%	87%	90%	89%	94%	85%	92%	84%		
	空	前年比	93%	93%	99%	96%	100%	93%	119%	92%	100%	101%	104%	97%	97%		
5大港計	実入り	前年比	89%	95%	93%	94%	92%	93%	109%	93%	95%	95%	97%	88%	86%		
		19年比	193%	102%	101%	71%	67%	63%	83%	72%	75%	90%	62%	71%	58%		
	空	前年比	215%	121%	105%	88%	89%	105%	131%	110%	120%	125%	77%	91%	124%		
5大港計	前年比	97%	97%	101%	100%	102%	101%	117%	101%	109%	107%	109%	99%	103%			
	19年比	91%	91%	94%	92%	93%	95%	103%	105%	100%	99%	99%	92%	94%			
5大港計	前年比	114%	108%	102%	80%	74%	66%	90%	83%	82%	94%	86%	96%	84%			
	19年比	111%	101%	109%	82%	82%	86%	93%	97%	87%	97%	82%	85%	94%			

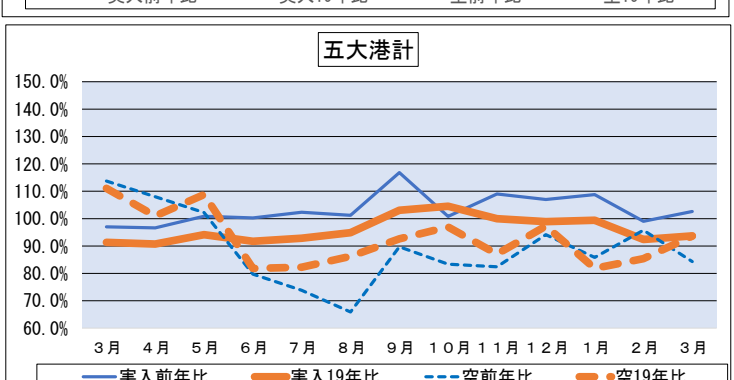
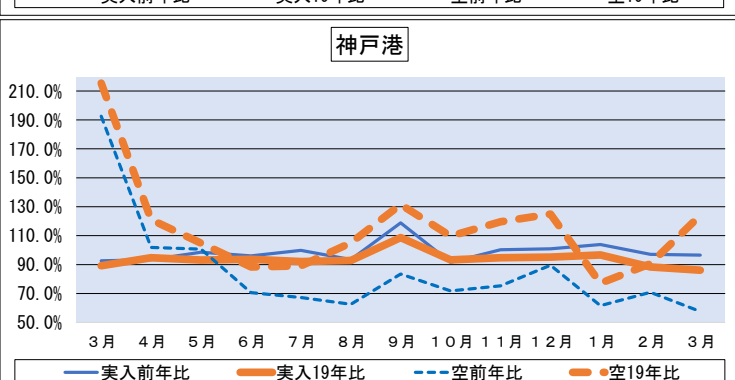
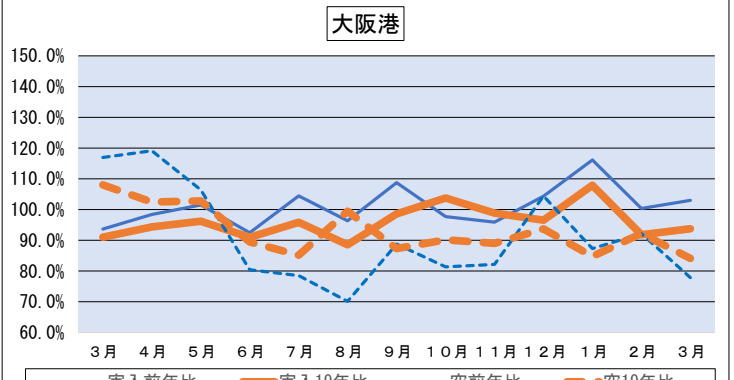
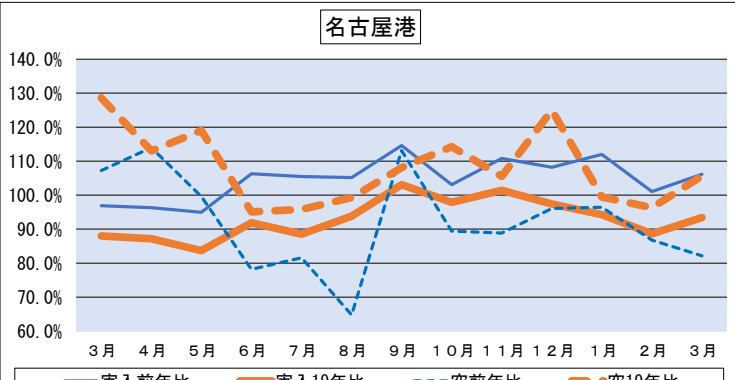
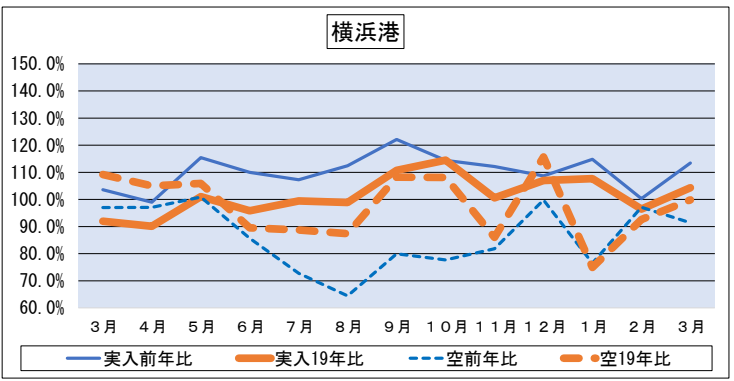
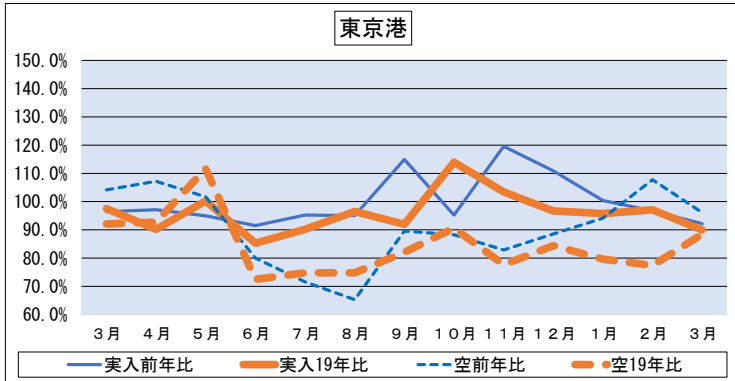


図1-8 主要5大港コンテナ統計 輸入 実入り・空 前年同月比・19年同月比

		2023年												2024年		
		3月	4月	5月	6月	7月	8月	9月	10月	11月	12月	1月	2月	3月		
東京港	実入り	前年比 100%	94%	93%	84%	83%	89%	92%	90%	94%	86%	97%	110%	95%		
	19年比	97%	90%	97%	91%	85%	92%	89%	88%	86%	87%	85%	96%	91%		
横浜港	実入り	前年比 115%	92%	101%	88%	86%	93%	98%	94%	105%	97%	99%	108%	101%		
	19年比	94%	94%	92%	96%	92%	98%	97%	105%	95%	104%	94%	107%	95%		
名古屋港	実入り	前年比 99%	97%	95%	89%	93%	90%	102%	95%	102%	99%	98%	103%	98%		
	19年比	94%	96%	86%	92%	90%	93%	103%	100%	100%	97%	86%	98%	92%		
大阪港	実入り	前年比 96%	97%	97%	81%	87%	83%	97%	88%	93%	98%	102%	100%	92%		
	19年比	97%	89%	93%	97%	82%	91%	96%	87%	94%	86%	93%	94%	90%		
神戸港	実入り	前年比 101%	94%	99%	87%	90%	88%	109%	88%	96%	94%	94%	101%	99%		
	19年比	98%	91%	92%	96%	86%	94%	117%	89%	99%	89%	84%	95%	97%		
5大港計	実入り	前年比 101%	95%	96%	85%	87%	89%	98%	91%	97%	93%	98%	105%	97%		
	19年比	96%	92%	93%	93%	86%	94%	97%	93%	93%	92%	88%	98%	93%		
	空	前年比 191%	197%	208%	212%	307%	219%	165%	143%	170%	150%	107%	115%	93%		
	19年比	125%	124%	89%	123%	168%	165%	146%	203%	221%	219%	87%	156%	116%		

