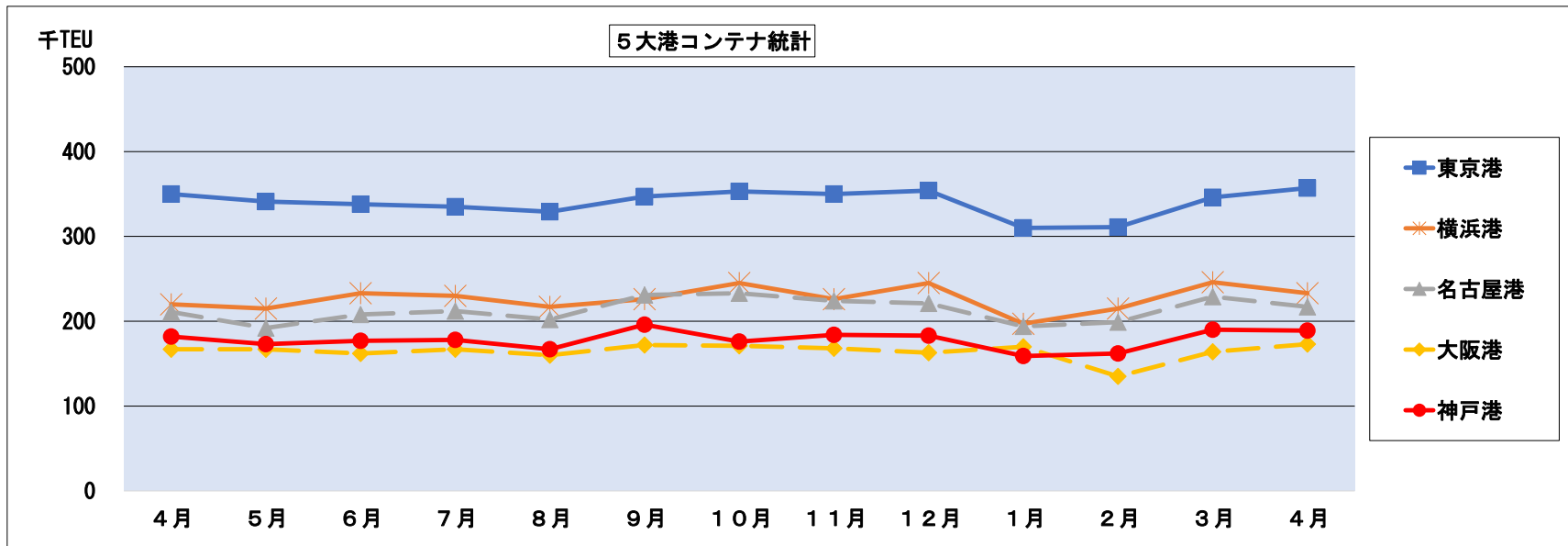


図1-1 主要5大港コンテナ統計

2024年4月

(単位:TEU)

| | 2023年 | | | | | | | | | 2024年 | | | | 2023/5~ 2024/4 計 |
|-------|-----------|-----------|-----------|-----------|-----------|-----------|-----------|-----------|-----------|-----------|-----------|-----------|-----------|---------------------|
| | 4月 | 5月 | 6月 | 7月 | 8月 | 9月 | 10月 | 11月 | 12月 | 1月 | 2月 | 3月 | 4月 | |
| 東京港 | 350,172 | 340,633 | 338,229 | 334,920 | 328,681 | 346,840 | 352,680 | 350,475 | 353,816 | 310,038 | 310,920 | 345,796 | 356,798 | 4,069,826 |
| 前年同期 | 355,309 | 354,952 | 398,000 | 405,133 | 395,020 | 359,073 | 393,065 | 357,001 | 375,038 | 319,496 | 297,877 | 368,657 | 350,172 | 4,373,484 |
| 前年同期比 | 98.6% | 96.0% | 85.0% | 82.7% | 83.2% | 96.6% | 89.7% | 98.2% | 94.3% | 97.0% | 104.4% | 93.8% | 101.9% | 93.1% |
| 横浜港 | 220,057 | 214,920 | 232,954 | 230,068 | 216,913 | 226,022 | 245,031 | 226,214 | 245,142 | 196,949 | 215,392 | 246,251 | 233,351 | 2,729,207 |
| 前年同期 | 219,583 | 196,359 | 229,248 | 234,373 | 220,763 | 214,702 | 238,035 | 212,003 | 231,886 | 196,407 | 199,507 | 233,197 | 220,057 | 2,626,537 |
| 前年同期比 | 100.2% | 109.5% | 101.6% | 98.2% | 98.3% | 105.3% | 102.9% | 106.7% | 105.7% | 100.3% | 108.0% | 105.6% | 106.0% | 103.9% |
| 名古屋港 | 210,818 | 192,007 | 207,765 | 211,562 | 202,260 | 230,739 | 232,938 | 223,702 | 220,681 | 194,028 | 198,512 | 229,336 | 216,771 | 2,560,301 |
| 前年同期 | 209,042 | 196,642 | 214,161 | 210,243 | 210,580 | 204,357 | 228,306 | 209,695 | 209,774 | 184,770 | 191,133 | 225,750 | 210,818 | 2,496,229 |
| 前年同期比 | 100.8% | 97.6% | 97.0% | 100.6% | 96.0% | 112.9% | 102.0% | 106.7% | 105.2% | 105.0% | 103.9% | 101.6% | 102.8% | 102.6% |
| 大阪港 | 167,299 | 166,672 | 161,732 | 166,928 | 160,371 | 172,495 | 170,727 | 168,499 | 163,082 | 170,264 | 134,659 | 163,633 | 172,785 | 1,971,847 |
| 前年同期 | 160,805 | 164,952 | 191,746 | 187,468 | 195,568 | 177,128 | 192,098 | 185,544 | 162,054 | 169,403 | 136,155 | 178,010 | 167,299 | 2,107,425 |
| 前年同期比 | 104.0% | 101.0% | 84.3% | 89.0% | 82.0% | 97.4% | 88.9% | 90.8% | 100.6% | 100.5% | 98.9% | 91.9% | 103.3% | 93.6% |
| 神戸港 | 182,225 | 173,242 | 176,906 | 178,017 | 167,094 | 195,916 | 176,119 | 183,991 | 182,504 | 159,429 | 162,438 | 189,797 | 189,014 | 2,134,467 |
| 前年同期 | 190,854 | 174,946 | 201,625 | 189,044 | 190,698 | 181,147 | 198,825 | 193,884 | 191,088 | 178,521 | 178,204 | 218,314 | 182,225 | 2,278,521 |
| 前年同期比 | 95.5% | 99.0% | 87.7% | 94.2% | 87.6% | 108.2% | 88.6% | 94.9% | 95.5% | 89.3% | 91.2% | 86.9% | 103.7% | 93.7% |
| 5大港計 | 1,130,571 | 1,087,474 | 1,117,586 | 1,121,495 | 1,075,319 | 1,172,012 | 1,177,495 | 1,152,881 | 1,165,225 | 1,030,708 | 1,021,921 | 1,174,813 | 1,168,719 | 13,465,648 |
| 前年同期 | 1,135,593 | 1,087,851 | 1,234,780 | 1,226,261 | 1,212,629 | 1,136,407 | 1,250,329 | 1,158,127 | 1,169,840 | 1,048,597 | 1,002,876 | 1,223,928 | 1,130,571 | 13,882,196 |
| 前年同期比 | 99.6% | 100.0% | 90.5% | 91.5% | 88.7% | 103.1% | 94.2% | 99.5% | 99.6% | 98.3% | 101.9% | 96.0% | 103.4% | 97.0% |



* 補足 2024年5月の東京港の外貿コンテナ取扱個数(最速報値)は34.3万TEU

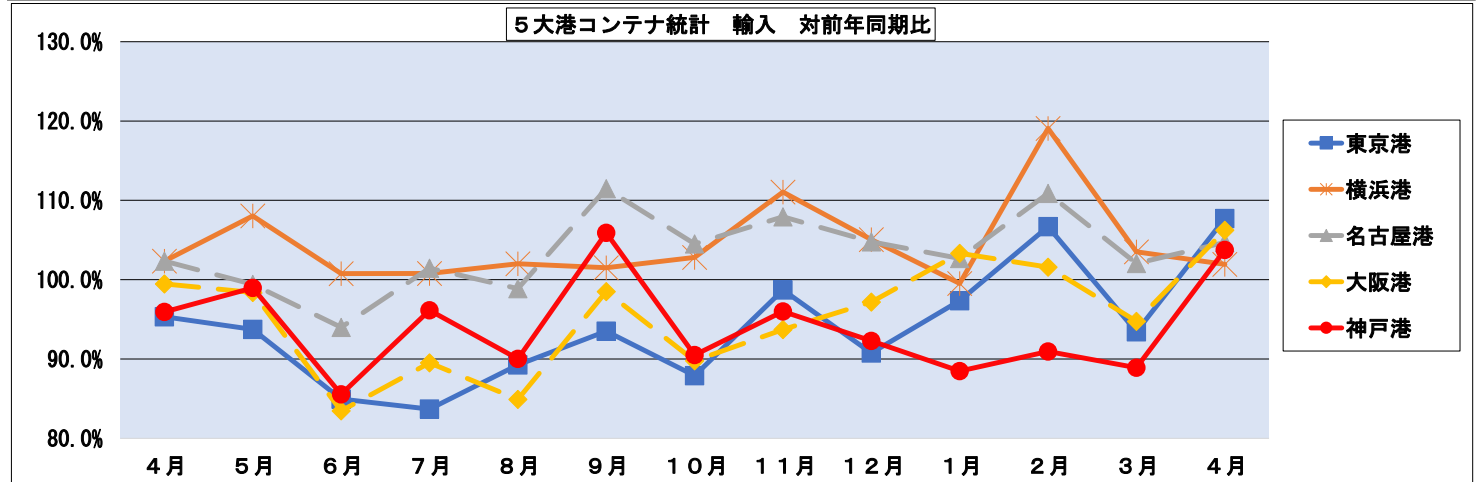
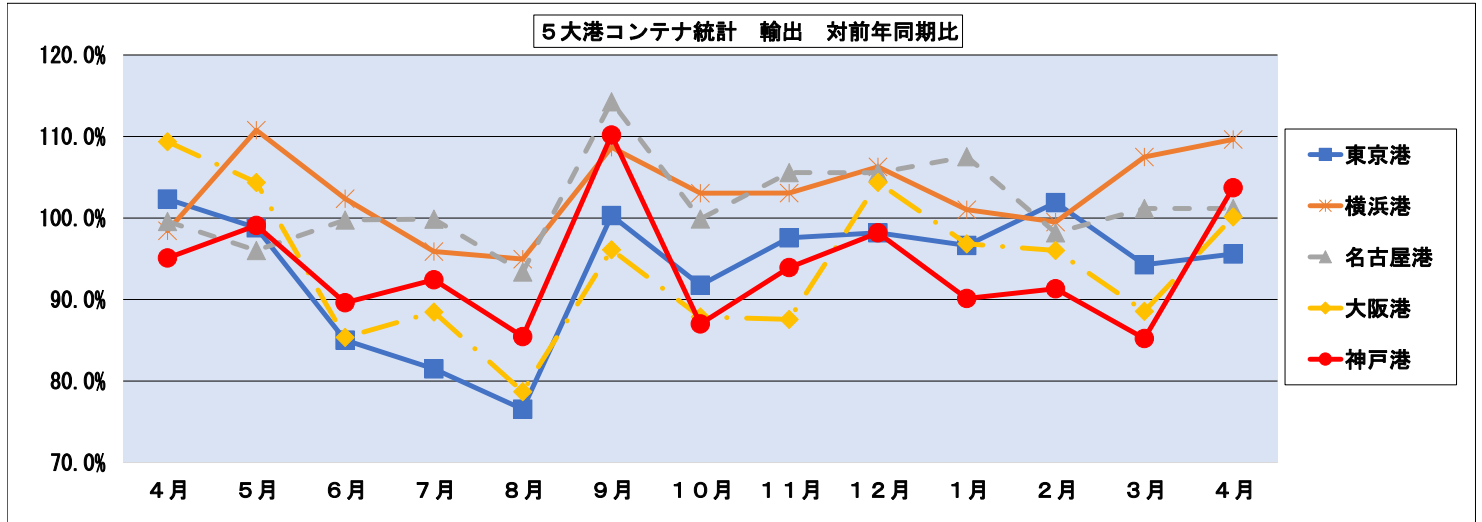
| | 総計 TEU | 輸出 TEU | 輸入 TEU |
|--------------|---------|---------|---------|
| 2024年5月 最速報値 | 342,821 | 153,450 | 189,371 |
| 2023年5月 速報値 | 340,633 | 154,772 | 185,861 |
| 比率 (%) | 100.6% | 99.1% | 101.9% |

図1-2 主要5大港コンテナ統計 輸出・輸入別

2024年4月

(単位: TEU)

| | 2023年 | | | | | | | | | | | | 2023/5~ 2024/4 計 | | |
|-------|---------|---------|---------|---------|---------|---------|---------|---------|---------|---------|---------|---------|---------------------|-----------|-----------|
| | 4月 | 5月 | 6月 | 7月 | 8月 | 9月 | 10月 | 11月 | 12月 | 1月 | 2月 | 3月 | | 4月 | |
| 東京港 | 輸出 | 168,050 | 154,772 | 156,200 | 152,887 | 143,863 | 163,705 | 170,792 | 163,402 | 177,869 | 134,816 | 145,715 | 155,179 | 160,630 | 1,879,830 |
| | 前年同期 | 164,245 | 156,660 | 183,725 | 187,602 | 187,963 | 163,222 | 186,140 | 167,463 | 181,173 | 139,506 | 143,013 | 164,622 | 168,050 | 2,029,139 |
| | 前年同期比 | 102.3% | 98.8% | 85.0% | 81.5% | 76.5% | 100.3% | 91.8% | 97.6% | 98.2% | 96.6% | 101.9% | 94.3% | 95.6% | 92.6% |
| | 輸入 | 182,122 | 185,861 | 182,029 | 182,033 | 184,818 | 183,135 | 181,888 | 187,073 | 175,947 | 175,222 | 165,205 | 190,617 | 196,168 | 2,189,996 |
| 前年同期 | 191,064 | 198,292 | 214,275 | 217,531 | 207,057 | 195,851 | 206,925 | 189,538 | 193,865 | 179,990 | 154,864 | 204,035 | 182,122 | 2,344,345 | |
| 前年同期比 | 95.3% | 93.7% | 85.0% | 83.7% | 89.3% | 93.5% | 87.9% | 98.7% | 90.8% | 97.4% | 106.7% | 93.4% | 107.7% | 93.4% | |
| 横浜港 | 輸出 | 117,422 | 112,623 | 124,326 | 120,160 | 111,599 | 122,535 | 131,521 | 118,859 | 133,141 | 99,968 | 112,709 | 131,642 | 128,733 | 1,447,816 |
| | 前年同期 | 119,296 | 101,670 | 121,444 | 125,320 | 117,525 | 112,745 | 127,631 | 115,322 | 125,272 | 98,962 | 113,267 | 122,471 | 117,422 | 1,399,051 |
| | 前年同期比 | 98.4% | 110.8% | 102.4% | 95.9% | 95.0% | 108.7% | 103.0% | 103.1% | 106.3% | 101.0% | 99.5% | 107.5% | 109.6% | 103.5% |
| | 輸入 | 102,634 | 102,297 | 108,627 | 109,908 | 105,314 | 103,487 | 113,510 | 107,355 | 112,002 | 96,981 | 102,683 | 114,609 | 104,619 | 1,281,392 |
| 前年同期 | 100,287 | 94,689 | 107,804 | 109,053 | 103,238 | 101,957 | 110,404 | 96,681 | 106,614 | 97,446 | 86,240 | 110,726 | 102,634 | 1,227,486 | |
| 前年同期比 | 102.3% | 108.0% | 100.8% | 100.8% | 102.0% | 101.5% | 102.8% | 111.0% | 105.1% | 99.5% | 119.1% | 103.5% | 101.9% | 104.4% | |
| 名古屋港 | 輸出 | 112,094 | 98,303 | 111,844 | 108,380 | 101,284 | 120,063 | 122,232 | 116,851 | 121,038 | 95,689 | 103,874 | 117,923 | 113,400 | 1,330,881 |
| | 前年同期 | 112,574 | 102,383 | 112,109 | 108,531 | 108,459 | 105,078 | 122,376 | 110,686 | 114,669 | 88,994 | 105,788 | 116,570 | 112,094 | 1,307,737 |
| | 前年同期比 | 99.6% | 96.0% | 99.8% | 99.9% | 93.4% | 114.3% | 99.9% | 105.6% | 105.6% | 107.5% | 98.2% | 101.2% | 101.2% | 101.8% |
| | 輸入 | 98,725 | 93,704 | 95,921 | 103,182 | 100,976 | 110,676 | 110,707 | 106,852 | 99,643 | 98,340 | 94,638 | 111,413 | 103,372 | 1,229,424 |
| 前年同期 | 96,468 | 94,258 | 102,052 | 101,713 | 102,121 | 99,279 | 105,931 | 99,009 | 95,105 | 95,776 | 85,345 | 109,180 | 98,725 | 1,188,494 | |
| 前年同期比 | 102.3% | 99.4% | 94.0% | 101.4% | 98.9% | 111.5% | 104.5% | 107.9% | 104.8% | 102.7% | 110.9% | 102.0% | 104.7% | 103.4% | |
| 大阪港 | 輸出 | 81,256 | 76,547 | 76,192 | 75,589 | 71,965 | 79,085 | 80,640 | 76,407 | 81,367 | 71,266 | 62,891 | 71,950 | 81,370 | 905,269 |
| | 前年同期 | 74,298 | 73,346 | 89,252 | 85,437 | 91,449 | 82,291 | 91,762 | 87,265 | 77,971 | 73,593 | 65,501 | 81,240 | 81,256 | 980,363 |
| | 前年同期比 | 109.4% | 104.4% | 85.4% | 88.5% | 78.7% | 96.1% | 87.9% | 87.6% | 104.4% | 96.8% | 96.0% | 88.6% | 100.1% | 92.3% |
| | 輸入 | 86,044 | 90,125 | 85,540 | 91,340 | 88,406 | 93,410 | 90,087 | 92,093 | 81,715 | 98,999 | 71,768 | 91,684 | 91,415 | 1,066,582 |
| 前年同期 | 86,507 | 91,605 | 102,493 | 102,031 | 104,119 | 94,837 | 100,336 | 98,279 | 84,083 | 95,809 | 70,654 | 96,770 | 86,044 | 1,127,060 | |
| 前年同期比 | 99.5% | 98.4% | 83.5% | 89.5% | 84.9% | 98.5% | 89.8% | 93.7% | 97.2% | 103.3% | 101.6% | 94.7% | 106.2% | 94.6% | |
| 神戸港 | 輸出 | 99,208 | 90,452 | 97,729 | 92,812 | 85,458 | 104,806 | 95,134 | 96,220 | 102,612 | 80,675 | 88,717 | 99,076 | 102,888 | 1,136,579 |
| | 前年同期 | 104,324 | 91,289 | 109,076 | 100,427 | 100,004 | 95,118 | 109,347 | 102,445 | 104,512 | 89,518 | 97,143 | 116,268 | 99,208 | 1,214,355 |
| | 前年同期比 | 95.1% | 99.1% | 89.6% | 92.4% | 85.5% | 110.2% | 87.0% | 93.9% | 98.2% | 90.1% | 91.3% | 85.2% | 103.7% | 93.6% |
| | 輸入 | 83,017 | 82,790 | 79,177 | 85,205 | 81,636 | 91,110 | 80,985 | 87,771 | 79,892 | 78,754 | 73,721 | 90,721 | 86,126 | 997,888 |
| 前年同期 | 86,530 | 83,657 | 92,549 | 88,617 | 90,694 | 86,029 | 89,478 | 91,439 | 86,576 | 89,003 | 81,061 | 102,046 | 83,017 | 1,064,166 | |
| 前年同期比 | 95.9% | 99.0% | 85.6% | 96.1% | 90.0% | 105.9% | 90.5% | 96.0% | 92.3% | 88.5% | 90.9% | 88.9% | 103.7% | 93.8% | |
| 5大港計 | 輸出 | 578,030 | 532,697 | 566,291 | 549,828 | 514,169 | 590,194 | 600,319 | 571,739 | 616,027 | 482,414 | 513,906 | 575,770 | 587,021 | 6,700,375 |
| | 前年同期 | 574,737 | 525,348 | 615,606 | 607,317 | 605,400 | 558,454 | 637,256 | 583,181 | 603,597 | 490,573 | 524,712 | 601,171 | 578,030 | 6,930,645 |
| | 前年同期比 | 100.6% | 101.4% | 92.0% | 90.5% | 84.9% | 105.7% | 94.2% | 98.0% | 102.1% | 98.3% | 97.9% | 95.8% | 101.6% | 96.7% |
| | 輸入 | 552,542 | 554,777 | 551,294 | 571,668 | 561,150 | 581,818 | 577,177 | 581,144 | 549,199 | 548,296 | 508,015 | 599,044 | 581,700 | 6,765,282 |
| 前年同期 | 560,856 | 562,501 | 619,173 | 618,945 | 607,229 | 577,953 | 613,074 | 574,946 | 566,243 | 558,024 | 478,164 | 622,757 | 552,542 | 6,951,551 | |
| 前年同期比 | 98.5% | 98.6% | 89.0% | 92.4% | 92.4% | 100.7% | 94.1% | 101.1% | 97.0% | 98.3% | 106.2% | 96.2% | 105.3% | 97.3% | |



出所：各港HP月報。データ収集・整理・作図：小屋、須藤、直井、渡辺

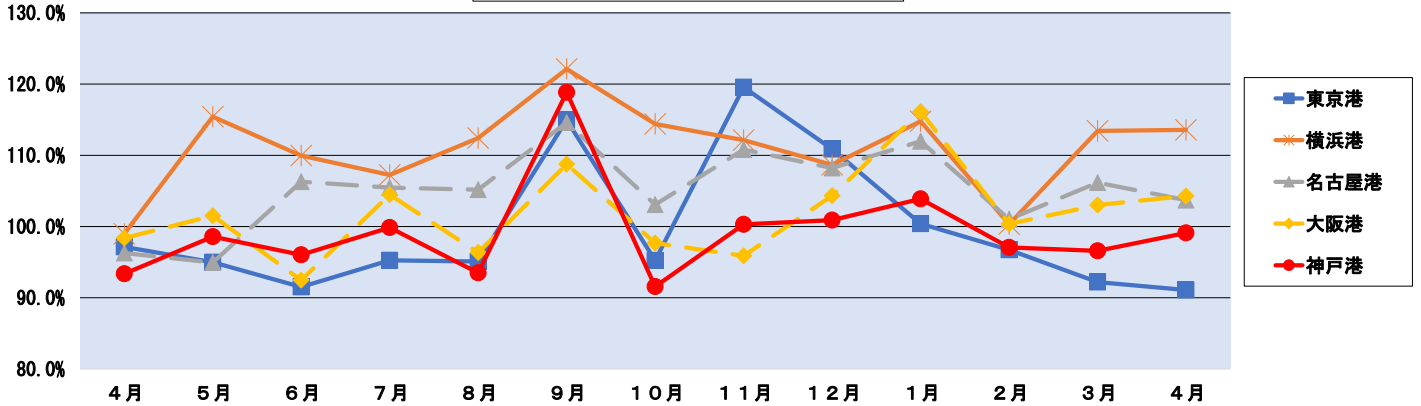
図1-3 主要5港コンテナ統計 輸出 実入・空別

2024年4月

(単位:TEU)

| | 2023年 | | | | | | | | | | | | 2024年 | | | | 2023/5~ 2024/4 計 |
|------|-------|---------|---------|---------|---------|---------|---------|---------|---------|---------|---------|---------|---------|---------|-----------|--|---------------------|
| | 4月 | 5月 | 6月 | 7月 | 8月 | 9月 | 10月 | 11月 | 12月 | 1月 | 2月 | 3月 | 4月 | | | | |
| 東京港 | 実入 | 77,480 | 64,613 | 73,111 | 74,907 | 67,474 | 79,318 | 88,744 | 80,239 | 86,555 | 56,064 | 73,536 | 71,860 | 70,575 | 886,996 | | |
| | 前年同期 | 79,767 | 68,027 | 79,883 | 78,643 | 70,956 | 69,003 | 93,190 | 67,109 | 78,062 | 55,848 | 76,025 | 77,935 | 77,480 | 892,161 | | |
| | 前年同期比 | 97.1% | 95.0% | 91.5% | 95.2% | 95.1% | 114.9% | 95.2% | 119.6% | 110.9% | 100.4% | 96.7% | 92.2% | 91.1% | 99.4% | | |
| | 空 | 90,570 | 90,159 | 83,089 | 77,980 | 76,389 | 84,387 | 82,048 | 83,163 | 91,314 | 78,752 | 72,179 | 83,319 | 90,055 | 992,834 | | |
| 横浜港 | 実入 | 84,478 | 88,633 | 103,842 | 108,959 | 117,007 | 94,219 | 92,950 | 100,354 | 103,111 | 83,658 | 66,988 | 86,687 | 90,570 | 1,136,978 | | |
| | 前年同期 | 84,478 | 88,633 | 103,842 | 108,959 | 117,007 | 94,219 | 92,950 | 100,354 | 103,111 | 83,658 | 66,988 | 86,687 | 90,570 | 1,136,978 | | |
| | 前年同期比 | 107.2% | 101.7% | 80.0% | 71.6% | 65.3% | 89.6% | 88.3% | 82.9% | 88.6% | 94.1% | 107.7% | 96.1% | 99.4% | 87.3% | | |
| | 空 | 32,576 | 32,820 | 32,479 | 30,003 | 27,562 | 28,718 | 30,684 | 28,220 | 33,583 | 27,225 | 27,915 | 30,256 | 32,379 | 361,844 | | |
| 名古屋港 | 実入 | 33,567 | 32,535 | 37,919 | 41,248 | 42,777 | 35,923 | 39,488 | 34,488 | 33,652 | 35,589 | 28,745 | 33,094 | 32,576 | 428,034 | | |
| | 前年同期 | 33,567 | 32,535 | 37,919 | 41,248 | 42,777 | 35,923 | 39,488 | 34,488 | 33,652 | 35,589 | 28,745 | 33,094 | 32,576 | 428,034 | | |
| | 前年同期比 | 97.0% | 100.9% | 85.7% | 72.7% | 64.4% | 79.9% | 77.7% | 81.8% | 99.8% | 76.5% | 97.1% | 91.4% | 99.4% | 84.5% | | |
| | 空 | 88,223 | 74,858 | 91,480 | 87,627 | 80,810 | 93,414 | 96,629 | 93,425 | 96,931 | 71,124 | 85,625 | 97,954 | 91,493 | 1,061,370 | | |
| 大阪港 | 実入 | 91,629 | 78,842 | 86,060 | 83,080 | 76,834 | 81,520 | 93,744 | 84,313 | 89,578 | 63,516 | 84,756 | 92,265 | 88,223 | 1,002,731 | | |
| | 前年同期 | 91,629 | 78,842 | 86,060 | 83,080 | 76,834 | 81,520 | 93,744 | 84,313 | 89,578 | 63,516 | 84,756 | 92,265 | 88,223 | 1,002,731 | | |
| | 前年同期比 | 96.3% | 94.9% | 106.3% | 105.5% | 105.2% | 114.6% | 103.1% | 110.8% | 108.2% | 112.0% | 101.0% | 106.2% | 103.7% | 105.8% | | |
| | 空 | 23,871 | 23,445 | 20,364 | 20,753 | 20,474 | 26,649 | 25,603 | 23,426 | 24,107 | 24,565 | 18,249 | 19,969 | 21,907 | 269,511 | | |
| 神戸港 | 実入 | 20,945 | 23,541 | 26,049 | 25,451 | 31,625 | 23,558 | 28,632 | 26,373 | 25,091 | 25,478 | 24,305 | 24,305 | 23,871 | 305,006 | | |
| | 前年同期 | 20,945 | 23,541 | 26,049 | 25,451 | 31,625 | 23,558 | 28,632 | 26,373 | 25,091 | 25,478 | 24,305 | 24,305 | 23,871 | 305,006 | | |
| | 前年同期比 | 114.0% | 99.6% | 78.2% | 81.5% | 64.7% | 113.1% | 89.4% | 88.8% | 96.1% | 96.4% | 86.8% | 82.2% | 91.8% | 88.4% | | |
| | 空 | 34,414 | 31,095 | 33,925 | 34,281 | 28,769 | 32,834 | 35,842 | 32,999 | 35,401 | 28,311 | 30,834 | 35,600 | 35,892 | 395,783 | | |
| 5大港計 | 実入 | 34,978 | 30,635 | 36,690 | 32,814 | 29,858 | 30,190 | 36,695 | 34,415 | 33,933 | 24,379 | 30,723 | 34,557 | 34,414 | 389,303 | | |
| | 前年同期 | 34,978 | 30,635 | 36,690 | 32,814 | 29,858 | 30,190 | 36,695 | 34,415 | 33,933 | 24,379 | 30,723 | 34,557 | 34,414 | 389,303 | | |
| | 前年同期比 | 98.4% | 101.5% | 92.5% | 104.5% | 96.4% | 108.8% | 97.7% | 95.9% | 104.3% | 116.1% | 100.4% | 103.0% | 104.3% | 101.7% | | |
| | 空 | 46,842 | 45,452 | 42,267 | 41,308 | 43,197 | 46,251 | 44,798 | 43,408 | 45,966 | 42,955 | 32,057 | 36,350 | 45,478 | 509,487 | | |
| 5大港計 | 実入 | 39,321 | 42,711 | 52,562 | 52,623 | 61,591 | 52,101 | 55,067 | 52,850 | 44,038 | 49,214 | 34,778 | 46,683 | 46,842 | 591,060 | | |
| | 前年同期 | 39,321 | 42,711 | 52,562 | 52,623 | 61,591 | 52,101 | 55,067 | 52,850 | 44,038 | 49,214 | 34,778 | 46,683 | 46,842 | 591,060 | | |
| | 前年同期比 | 119.1% | 106.4% | 80.4% | 78.5% | 70.1% | 88.8% | 81.4% | 82.1% | 104.4% | 87.3% | 92.2% | 77.9% | 97.1% | 86.2% | | |
| | 空 | 77,533 | 68,729 | 78,237 | 77,381 | 69,207 | 85,394 | 77,037 | 76,556 | 80,261 | 62,711 | 73,644 | 79,535 | 76,833 | 905,525 | | |
| 5大港計 | 実入 | 83,048 | 69,721 | 81,479 | 77,490 | 74,024 | 71,854 | 84,132 | 76,328 | 79,547 | 60,371 | 75,874 | 82,348 | 77,533 | 910,701 | | |
| | 前年同期 | 83,048 | 69,721 | 81,479 | 77,490 | 74,024 | 71,854 | 84,132 | 76,328 | 79,547 | 60,371 | 75,874 | 82,348 | 77,533 | 910,701 | | |
| | 前年同期比 | 93.4% | 98.6% | 96.0% | 99.9% | 93.5% | 118.8% | 91.6% | 100.3% | 100.9% | 103.9% | 97.1% | 96.6% | 99.1% | 99.4% | | |
| | 空 | 21,675 | 21,723 | 19,492 | 15,431 | 16,251 | 19,412 | 18,097 | 19,664 | 22,351 | 17,964 | 15,073 | 19,541 | 26,055 | 231,054 | | |
| 5大港計 | 実入 | 21,276 | 21,568 | 27,597 | 22,937 | 25,980 | 23,264 | 25,215 | 26,117 | 24,965 | 29,147 | 21,269 | 33,920 | 21,675 | 303,654 | | |
| | 前年同期 | 21,276 | 21,568 | 27,597 | 22,937 | 25,980 | 23,264 | 25,215 | 26,117 | 24,965 | 29,147 | 21,269 | 33,920 | 21,675 | 303,654 | | |
| | 前年同期比 | 101.9% | 100.7% | 70.6% | 67.3% | 62.6% | 83.4% | 71.8% | 75.3% | 89.5% | 61.6% | 70.9% | 57.6% | 120.2% | 76.1% | | |
| | 空 | 362,496 | 319,099 | 368,601 | 364,353 | 330,298 | 384,777 | 399,089 | 373,858 | 398,706 | 290,953 | 348,433 | 386,335 | 371,147 | 4,335,649 | | |
| 5大港計 | 実入 | 375,151 | 316,360 | 367,637 | 356,099 | 326,420 | 329,389 | 395,904 | 342,999 | 372,740 | 267,487 | 351,901 | 376,482 | 362,496 | 4,165,914 | | |
| | 前年同期 | 375,151 | 316,360 | 367,637 | 356,099 | 326,420 | 329,389 | 395,904 | 342,999 | 372,740 | 267,487 | 351,901 | 376,482 | 362,496 | 4,165,914 | | |
| | 前年同期比 | 96.6% | 100.9% | 100.3% | 102.3% | 101.2% | 116.8% | 100.8% | 109.0% | 107.0% | 108.8% | 99.0% | 102.6% | 102.4% | 104.1% | | |
| | 空 | 215,534 | 213,599 | 197,691 | 185,475 | 183,873 | 205,417 | 201,230 | 197,881 | 217,321 | 191,461 | 165,473 | 189,435 | 215,874 | 2,364,730 | | |
| 5大港計 | 実入 | 199,587 | 208,988 | 247,969 | 251,218 | 278,980 | 229,065 | 241,352 | 240,182 | 230,857 | 223,086 | 172,812 | 224,689 | 215,534 | 2,764,732 | | |
| | 前年同期 | 199,587 | 208,988 | 247,969 | 251,218 | 278,980 | 229,065 | 241,352 | 240,182 | 230,857 | 223,086 | 172,812 | 224,689 | 215,534 | 2,764,732 | | |
| | 前年同期比 | 108.0% | 102.2% | 79.7% | 73.8% | 65.9% | 89.7% | 83.4% | 82.4% | 94.1% | 85.8% | 95.8% | 84.3% | 100.2% | 85.5% | | |

5大港コンテナ統計 輸出 実入 対前年同期比



5大港コンテナ統計 輸出 空 対前年同期比

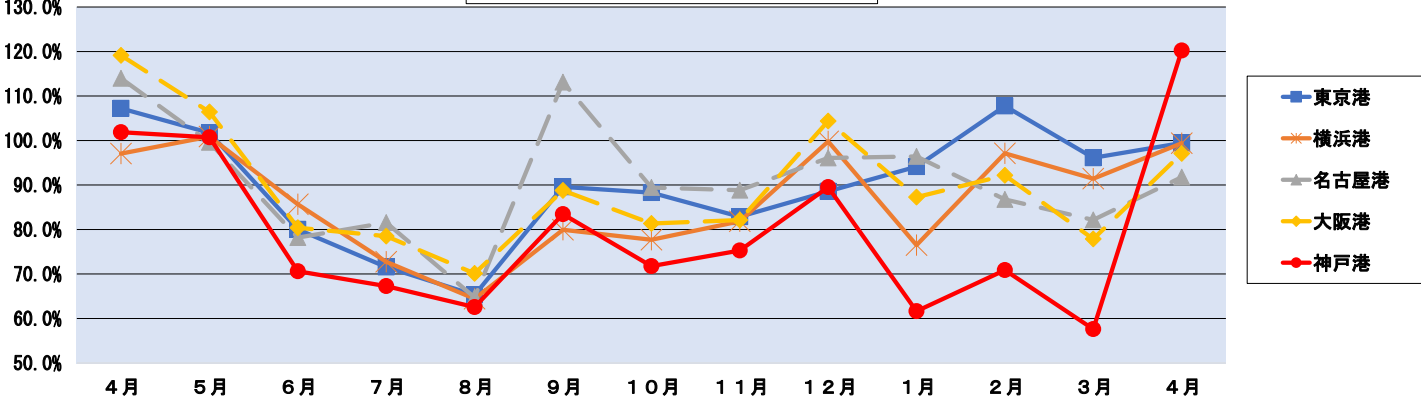


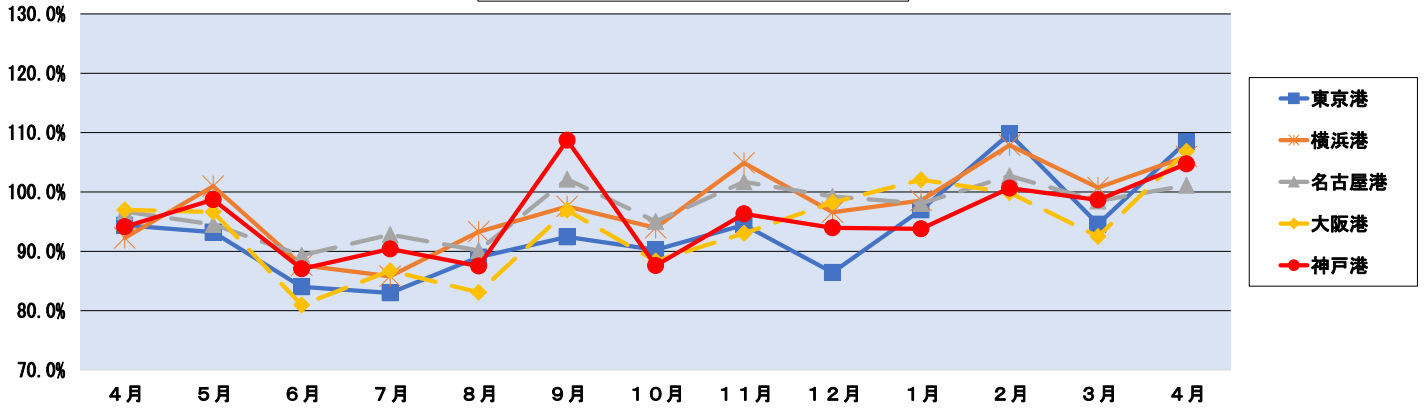
図1-4 主要5港コンテナ統計 輸入 実入・空別

2024年4月

(単位:TEU)

| | 2023年 | | | | | | | | | | | | 2024年 | | | | 2023/5~ 2024/4 計 |
|-------|--------|---------|---------|---------|---------|---------|---------|---------|---------|---------|---------|---------|---------|---------|-----------|--|---------------------|
| | 4月 | 5月 | 6月 | 7月 | 8月 | 9月 | 10月 | 11月 | 12月 | 1月 | 2月 | 3月 | 4月 | | | | |
| 東京港 | 実入 | 178,740 | 183,591 | 178,911 | 179,409 | 183,469 | 178,800 | 175,246 | 177,689 | 166,061 | 173,801 | 163,115 | 189,570 | 193,903 | 2,143,565 | | |
| | 前年同期 | 189,362 | 196,910 | 212,952 | 216,179 | 206,078 | 193,450 | 194,178 | 188,108 | 192,126 | 179,210 | 148,541 | 200,474 | 178,740 | 2,306,946 | | |
| | 前年同期比 | 94.4% | 93.2% | 84.0% | 83.0% | 89.0% | 92.4% | 90.3% | 94.5% | 86.4% | 97.0% | 109.8% | 94.6% | 108.5% | 92.9% | | |
| | 空 | 3,382 | 2,270 | 3,118 | 2,624 | 1,349 | 4,335 | 6,642 | 9,384 | 9,886 | 1,421 | 2,090 | 1,047 | 2,265 | 46,431 | | |
| 横浜港 | 実入 | 88,594 | 93,079 | 92,716 | 91,294 | 92,585 | 93,608 | 95,743 | 94,076 | 93,234 | 92,829 | 84,787 | 96,606 | 93,896 | 1,114,453 | | |
| | 前年同期 | 96,024 | 92,188 | 105,774 | 106,405 | 99,253 | 95,942 | 101,895 | 89,689 | 96,523 | 94,198 | 78,591 | 95,911 | 88,594 | 1,144,963 | | |
| | 前年同期比 | 92.3% | 101.0% | 87.7% | 85.8% | 93.3% | 97.6% | 94.0% | 104.9% | 96.6% | 98.5% | 107.9% | 100.7% | 106.0% | 97.3% | | |
| | 空 | 14,040 | 9,218 | 15,912 | 18,615 | 12,729 | 9,879 | 17,767 | 13,279 | 18,768 | 4,152 | 17,896 | 18,003 | 10,723 | 166,941 | | |
| 名古屋港 | 実入 | 88,056 | 87,088 | 86,397 | 90,946 | 88,789 | 96,147 | 95,993 | 94,088 | 86,465 | 90,163 | 78,335 | 95,243 | 89,044 | 1,078,698 | | |
| | 前年同期 | 91,056 | 92,135 | 96,730 | 97,990 | 98,491 | 94,109 | 101,014 | 92,519 | 87,123 | 91,950 | 76,268 | 96,725 | 88,056 | 1,113,110 | | |
| | 前年同期比 | 96.7% | 94.5% | 89.3% | 92.8% | 90.1% | 102.2% | 95.0% | 101.7% | 99.2% | 98.1% | 102.7% | 98.5% | 101.1% | 96.9% | | |
| | 空 | 10,669 | 6,616 | 9,524 | 12,236 | 12,187 | 14,529 | 14,714 | 12,764 | 13,178 | 8,177 | 16,303 | 16,170 | 14,328 | 150,726 | | |
| 大阪港 | 実入 | 83,132 | 87,715 | 82,138 | 87,378 | 85,204 | 91,121 | 86,849 | 88,591 | 79,471 | 96,466 | 68,581 | 86,426 | 88,833 | 1,028,773 | | |
| | 前年同期 | 85,723 | 90,770 | 101,473 | 100,744 | 102,538 | 94,029 | 98,274 | 95,233 | 80,902 | 94,536 | 68,651 | 93,444 | 83,132 | 1,103,726 | | |
| | 前年同期比 | 97.0% | 96.6% | 80.9% | 86.7% | 83.1% | 96.9% | 88.4% | 93.0% | 98.2% | 102.0% | 99.9% | 92.5% | 106.9% | 93.2% | | |
| | 空 | 2,912 | 2,410 | 3,402 | 3,962 | 3,202 | 2,289 | 3,238 | 3,502 | 2,244 | 2,533 | 3,187 | 5,258 | 2,582 | 37,809 | | |
| 神戸港 | 実入 | 73,521 | 76,676 | 73,526 | 73,909 | 73,137 | 84,065 | 71,315 | 77,494 | 67,615 | 71,127 | 63,016 | 80,746 | 76,988 | 889,614 | | |
| | 前年同期 | 78,108 | 77,687 | 84,467 | 81,754 | 83,571 | 77,324 | 81,408 | 80,462 | 71,961 | 75,845 | 62,610 | 81,834 | 73,521 | 932,444 | | |
| | 前年同期比 | 94.1% | 98.7% | 87.0% | 90.4% | 87.5% | 108.7% | 87.6% | 96.3% | 94.0% | 93.8% | 100.6% | 98.7% | 104.7% | 95.4% | | |
| | 空 | 9,496 | 6,114 | 5,651 | 11,296 | 8,499 | 7,045 | 9,670 | 10,277 | 12,277 | 7,627 | 10,705 | 9,975 | 9,138 | 108,274 | | |
| 5大港計 | 実入 | 512,043 | 528,149 | 513,688 | 522,936 | 523,184 | 543,741 | 525,146 | 531,938 | 492,846 | 524,386 | 457,834 | 548,591 | 542,664 | 6,255,103 | | |
| | 前年同期 | 540,273 | 549,690 | 601,396 | 603,072 | 589,931 | 554,854 | 576,769 | 546,011 | 528,635 | 535,739 | 434,661 | 568,388 | 512,043 | 6,601,189 | | |
| | 前年同期比 | 94.8% | 96.1% | 85.4% | 86.7% | 88.7% | 98.0% | 91.0% | 97.4% | 93.2% | 97.9% | 105.3% | 96.5% | 106.0% | 94.8% | | |
| | 空 | 40,499 | 26,628 | 37,607 | 48,733 | 37,966 | 38,077 | 52,031 | 49,206 | 56,353 | 23,910 | 50,181 | 50,453 | 39,036 | 510,181 | | |
| 前年同期 | 20,583 | 12,811 | 17,777 | 15,873 | 17,298 | 23,099 | 36,305 | 28,935 | 37,608 | 22,286 | 43,503 | 54,369 | 40,499 | 350,363 | | | |
| 前年同期比 | 196.8% | 207.9% | 211.5% | 307.0% | 219.5% | 164.8% | 143.3% | 170.1% | 149.8% | 107.3% | 115.4% | 92.8% | 96.4% | 145.6% | | | |

5大港コンテナ統計 輸入 実入 対前年同期比



5大港コンテナ統計 輸入 空 (TEU)

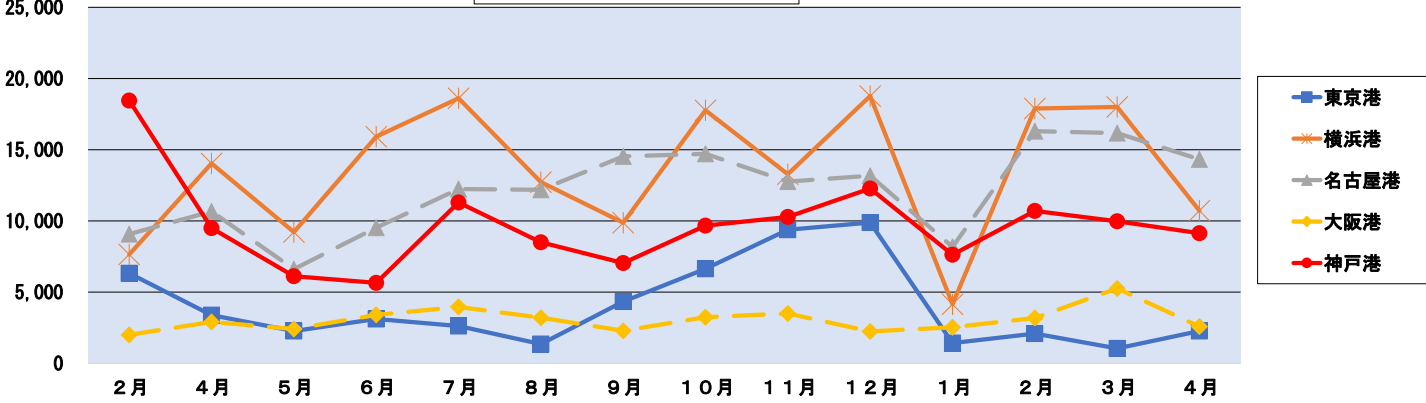


図1-5 主要5大港コンテナ統計 前年同月比・19年同月比

| | | 2023年 | | | | | | | | | | 2024年 | | | |
|------|------|-------|------|------|------|-----|------|------|------|------|------|-------|------|------|--|
| | | 4月 | 5月 | 6月 | 7月 | 8月 | 9月 | 10月 | 11月 | 12月 | 1月 | 2月 | 3月 | 4月 | |
| 東京港 | 前年比 | 99% | 96% | 85% | 83% | 83% | 97% | 90% | 98% | 94% | 97% | 104% | 94% | 102% | |
| | 19年比 | 92% | 102% | 85% | 84% | 89% | 89% | 96% | 89% | 91% | 86% | 91% | 90% | 93% | |
| 横浜港 | 前年比 | 100% | 109% | 102% | 98% | 98% | 105% | 103% | 107% | 106% | 100% | 108% | 106% | 106% | |
| | 19年比 | 95% | 97% | 97% | 98% | 99% | 104% | 114% | 98% | 112% | 91% | 103% | 100% | 101% | |
| 名古屋港 | 前年比 | 101% | 98% | 97% | 101% | 96% | 113% | 102% | 107% | 105% | 105% | 104% | 102% | 103% | |
| | 19年比 | 94% | 87% | 92% | 91% | 96% | 106% | 103% | 104% | 102% | 92% | 96% | 95% | 96% | |
| 大阪港 | 前年比 | 104% | 101% | 84% | 89% | 82% | 97% | 89% | 91% | 101% | 101% | 99% | 92% | 103% | |
| | 19年比 | 93% | 96% | 94% | 86% | 93% | 94% | 92% | 95% | 90% | 93% | 93% | 90% | 96% | |
| 神戸港 | 前年比 | 95% | 99% | 88% | 94% | 88% | 108% | 89% | 95% | 96% | 89% | 91% | 87% | 104% | |
| | 19年比 | 98% | 95% | 95% | 93% | 97% | 115% | 95% | 102% | 98% | 89% | 95% | 96% | 102% | |
| 5大港計 | 前年比 | 100% | 100% | 91% | 91% | 89% | 103% | 94% | 100% | 100% | 98% | 102% | 96% | 103% | |
| | 19年比 | 94% | 96% | 91% | 90% | 94% | 99% | 100% | 96% | 98% | 90% | 95% | 94% | 97% | |

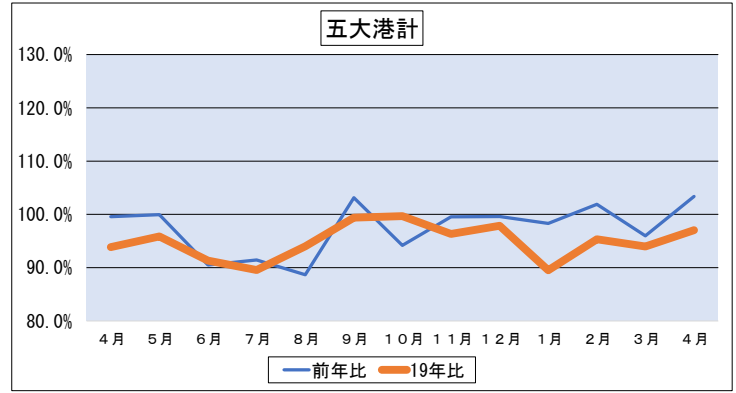
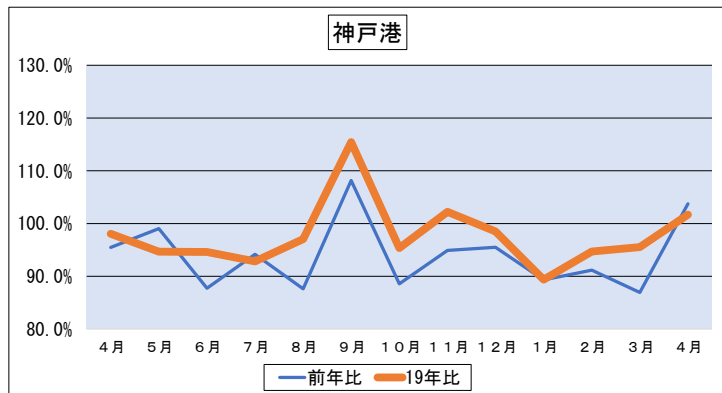
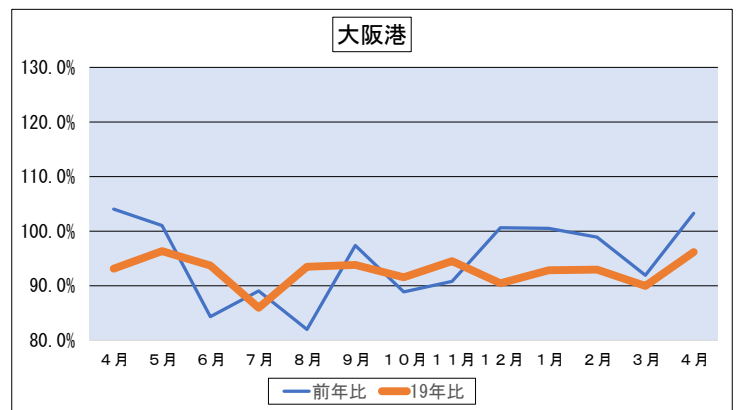
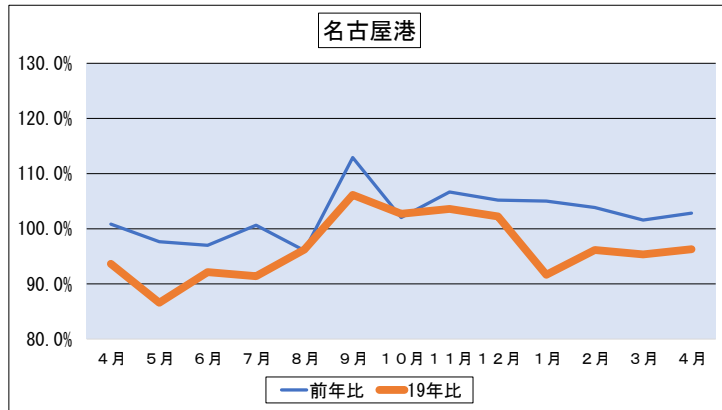
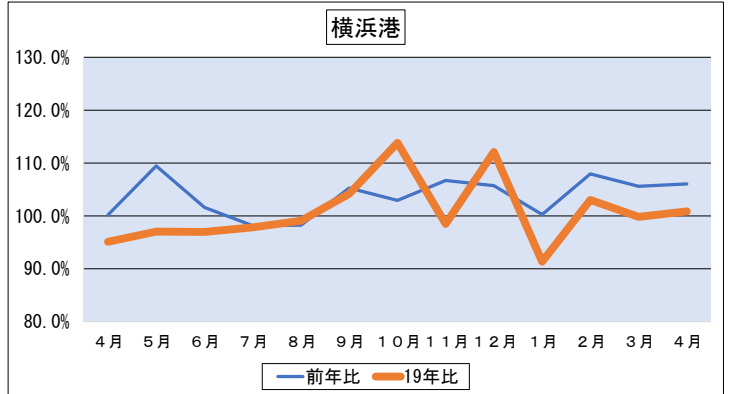
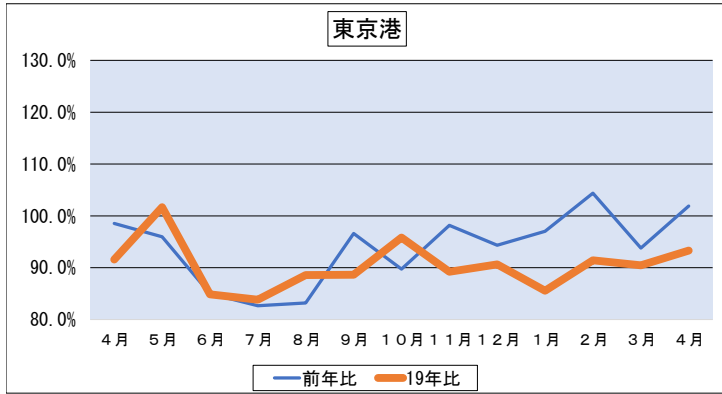


図1-6 主要5大港コンテナ統計 輸出・輸入 前年同月比・19年同月比

| | | 2023年 | | | | | | | | | | | | 2024年 | | | |
|------|------|----------|------|------|------|-----|------|------|------|------|------|------|------|-------|--|--|--|
| | | 4月 | 5月 | 6月 | 7月 | 8月 | 9月 | 10月 | 11月 | 12月 | 1月 | 2月 | 3月 | 4月 | | | |
| 東京港 | 輸出 | 前年比 102% | 99% | 85% | 81% | 77% | 100% | 92% | 98% | 98% | 97% | 102% | 94% | 96% | | | |
| | 19年比 | 92% | 107% | 78% | 82% | 84% | 87% | 101% | 89% | 90% | 86% | 86% | 89% | 87% | | | |
| 横浜港 | 輸出 | 前年比 98% | 111% | 102% | 96% | 95% | 109% | 103% | 103% | 106% | 101% | 100% | 107% | 110% | | | |
| | 19年比 | 94% | 102% | 94% | 97% | 96% | 110% | 113% | 97% | 109% | 96% | 95% | 103% | 103% | | | |
| 名古屋港 | 輸出 | 前年比 100% | 96% | 100% | 100% | 93% | 114% | 100% | 106% | 106% | 108% | 98% | 101% | 101% | | | |
| | 19年比 | 92% | 90% | 92% | 90% | 95% | 104% | 101% | 102% | 102% | 96% | 95% | 103% | 103% | | | |
| 大阪港 | 輸出 | 前年比 109% | 104% | 85% | 88% | 79% | 96% | 88% | 88% | 104% | 97% | 96% | 89% | 100% | | | |
| | 19年比 | 99% | 100% | 90% | 90% | 95% | 92% | 96% | 93% | 95% | 93% | 92% | 89% | 99% | | | |
| 神戸港 | 輸出 | 前年比 95% | 99% | 90% | 92% | 85% | 110% | 87% | 94% | 98% | 90% | 91% | 85% | 104% | | | |
| | 19年比 | 100% | 96% | 93% | 92% | 95% | 112% | 96% | 99% | 100% | 91% | 89% | 92% | 103% | | | |
| 5大港計 | 輸出 | 前年比 101% | 101% | 92% | 91% | 85% | 106% | 94% | 98% | 102% | 98% | 98% | 96% | 102% | | | |
| | 19年比 | 94% | 99% | 88% | 89% | 92% | 99% | 102% | 95% | 98% | 92% | 90% | 94% | 96% | | | |
| | 輸入 | 前年比 99% | 99% | 89% | 92% | 92% | 101% | 94% | 101% | 97% | 98% | 106% | 96% | 105% | | | |
| | 19年比 | 93% | 93% | 95% | 90% | 96% | 100% | 98% | 98% | 97% | 88% | 101% | 94% | 98% | | | |

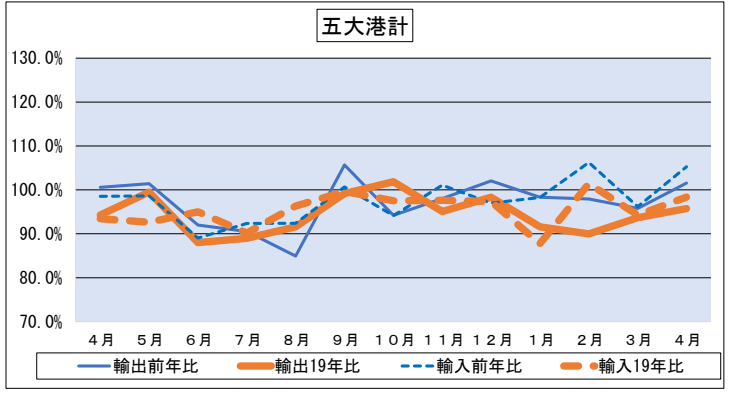
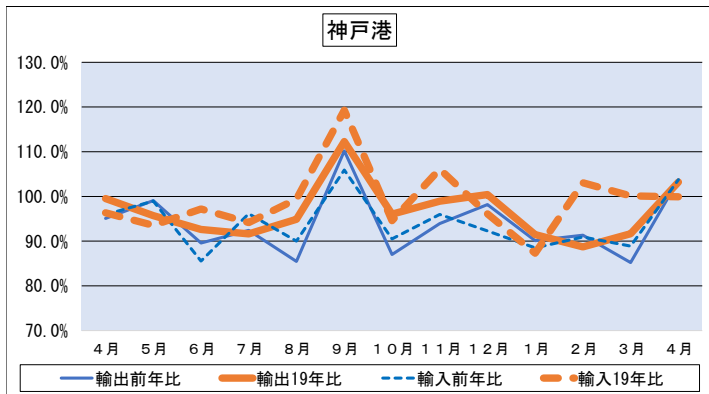
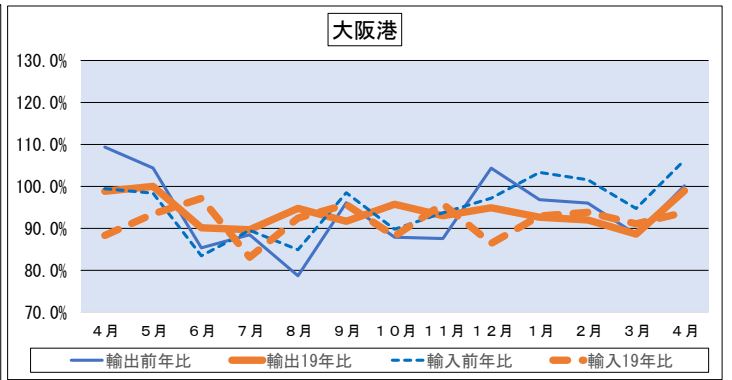
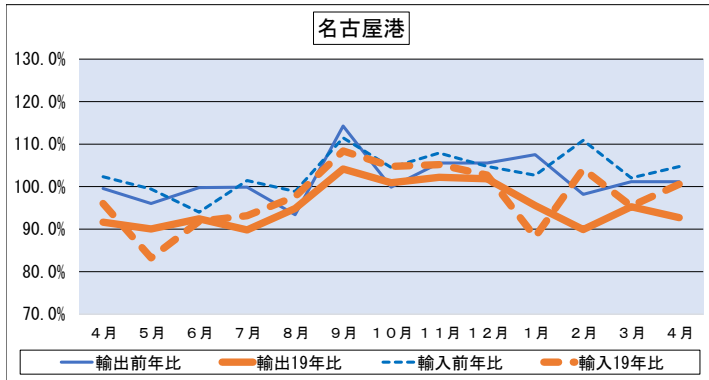
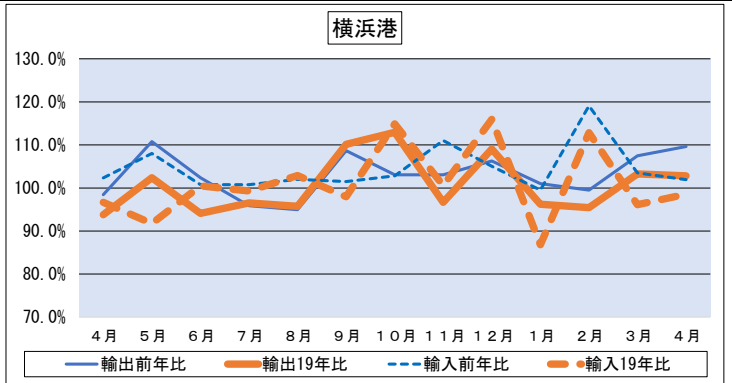
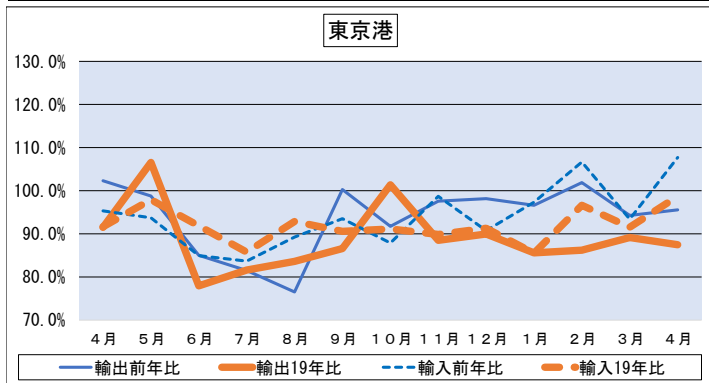


図1-7 主要5大港コンテナ統計 輸出 実入り・空 前年同月比・19年同月比

| | | | 2023年 | | | | | | | | | | | | 2024年 | | | |
|------|-----|------|-------|------|------|------|------|------|------|------|------|------|------|------|-------|--|--|--|
| | | | 4月 | 5月 | 6月 | 7月 | 8月 | 9月 | 10月 | 11月 | 12月 | 1月 | 2月 | 3月 | 4月 | | | |
| 東京港 | 実入り | 前年比 | 97% | 95% | 92% | 95% | 95% | 115% | 95% | 120% | 111% | 100% | 97% | 92% | 91% | | | |
| | | 19年比 | 90% | 100% | 85% | 90% | 96% | 92% | 114% | 103% | 97% | 96% | 97% | 90% | 82% | | | |
| | 空 | 前年比 | 107% | 102% | 80% | 72% | 65% | 90% | 88% | 83% | 89% | 94% | 108% | 96% | 99% | | | |
| | | 19年比 | 93% | 112% | 72% | 75% | 75% | 82% | 91% | 78% | 84% | 80% | 77% | 88% | 92% | | | |
| 横浜港 | 実入り | 前年比 | 99% | 115% | 110% | 107% | 112% | 122% | 114% | 112% | 109% | 115% | 100% | 113% | 114% | | | |
| | | 19年比 | 90% | 101% | 96% | 99% | 99% | 111% | 114% | 101% | 107% | 108% | 96% | 104% | 102% | | | |
| | 空 | 前年比 | 97% | 101% | 86% | 73% | 64% | 80% | 78% | 82% | 100% | 76% | 97% | 91% | 99% | | | |
| | | 19年比 | 105% | 106% | 90% | 89% | 87% | 108% | 108% | 86% | 116% | 75% | 93% | 100% | 104% | | | |
| 名古屋港 | 実入り | 前年比 | 96% | 95% | 106% | 105% | 105% | 115% | 103% | 111% | 108% | 112% | 101% | 106% | 104% | | | |
| | | 19年比 | 87% | 84% | 92% | 89% | 94% | 103% | 98% | 101% | 97% | 94% | 89% | 93% | 90% | | | |
| | 空 | 前年比 | 114% | 100% | 78% | 82% | 65% | 113% | 89% | 89% | 96% | 96% | 87% | 82% | 92% | | | |
| | | 19年比 | 113% | 119% | 95% | 96% | 99% | 108% | 114% | 106% | 125% | 99% | 96% | 106% | 104% | | | |
| 大阪港 | 実入り | 前年比 | 98% | 102% | 92% | 104% | 96% | 109% | 98% | 96% | 104% | 116% | 100% | 103% | 104% | | | |
| | | 19年比 | 94% | 96% | 91% | 96% | 89% | 99% | 104% | 99% | 97% | 108% | 92% | 94% | 98% | | | |
| | 空 | 前年比 | 119% | 106% | 80% | 78% | 70% | 89% | 81% | 82% | 104% | 87% | 92% | 78% | 97% | | | |
| | | 19年比 | 102% | 103% | 89% | 85% | 99% | 87% | 90% | 89% | 94% | 85% | 92% | 84% | 99% | | | |
| 神戸港 | 実入り | 前年比 | 93% | 99% | 96% | 100% | 93% | 119% | 92% | 100% | 101% | 104% | 97% | 97% | 99% | | | |
| | | 19年比 | 95% | 93% | 94% | 92% | 93% | 109% | 93% | 95% | 95% | 97% | 88% | 86% | 94% | | | |
| | 空 | 前年比 | 102% | 101% | 71% | 67% | 63% | 83% | 72% | 75% | 90% | 62% | 71% | 58% | 120% | | | |
| | | 19年比 | 121% | 105% | 88% | 89% | 105% | 131% | 110% | 120% | 125% | 77% | 91% | 124% | 146% | | | |
| 5大港計 | 実入り | 前年比 | 97% | 101% | 100% | 102% | 101% | 117% | 101% | 109% | 107% | 109% | 99% | 103% | 102% | | | |
| | | 19年比 | 91% | 94% | 92% | 93% | 95% | 103% | 105% | 100% | 99% | 99% | 92% | 94% | 93% | | | |
| | 空 | 前年比 | 108% | 102% | 80% | 74% | 66% | 90% | 83% | 82% | 94% | 86% | 96% | 84% | 100% | | | |
| | | 19年比 | 101% | 109% | 82% | 82% | 86% | 93% | 97% | 87% | 97% | 82% | 85% | 94% | 101% | | | |

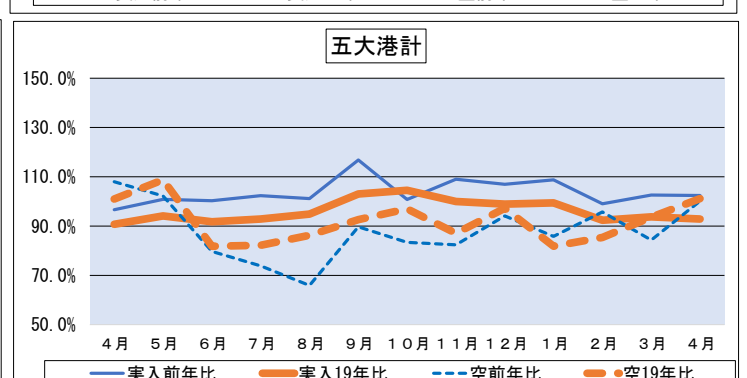
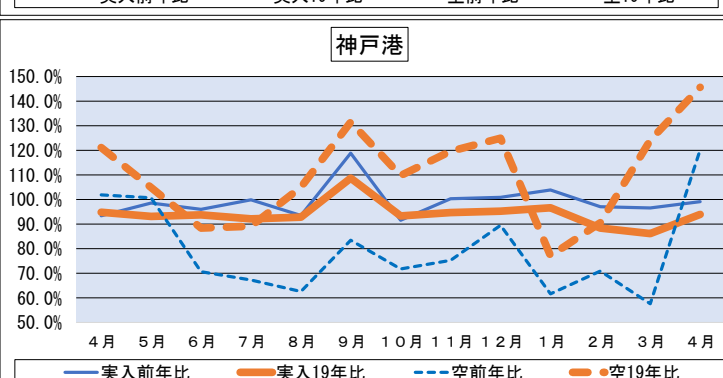
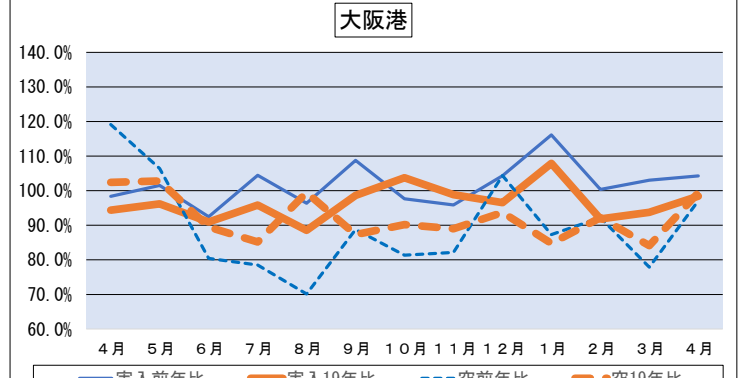
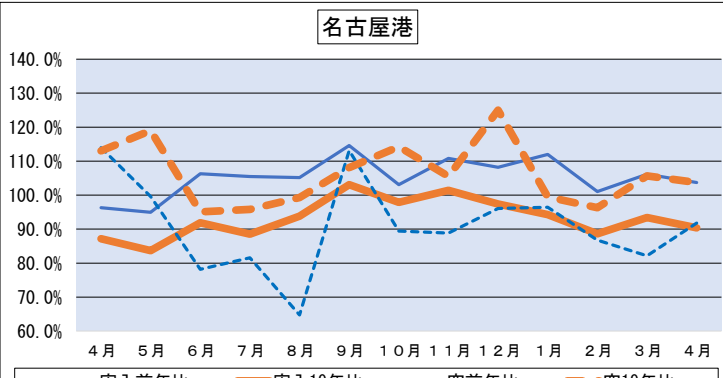
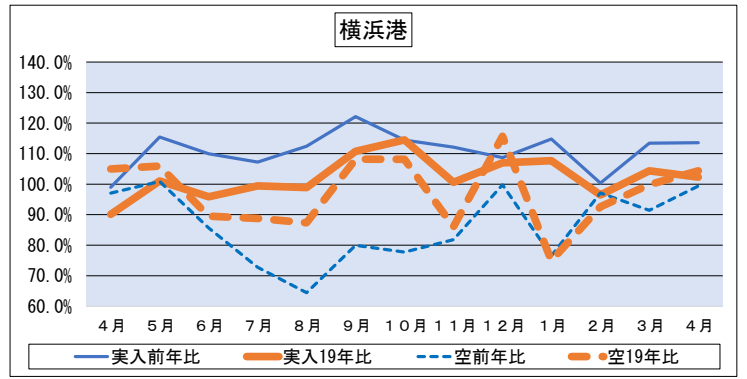
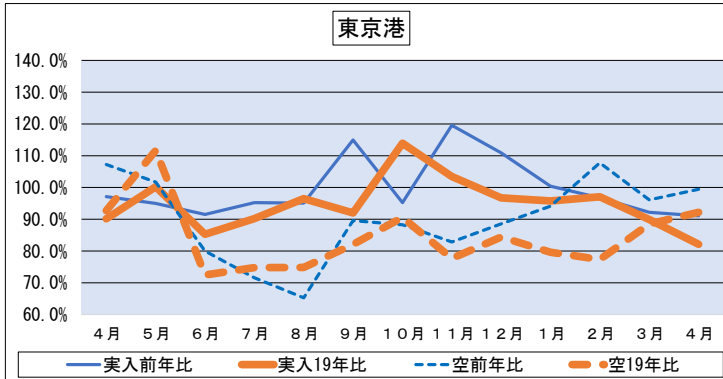


図1-8 主要5大港コンテナ統計 輸入 実入り・空 前年同月比・19年同月比

| | | | 2023年 | | | | | | | | | | | | 2024年 | | | |
|------|------|------|-------|------|------|------|------|-------|-------|------|------|------|------|------|-------|--|--|--|
| | | | 4月 | 5月 | 6月 | 7月 | 8月 | 9月 | 10月 | 11月 | 12月 | 1月 | 2月 | 3月 | 4月 | | | |
| 東京港 | 実入り | 前年比 | 94% | 93% | 84% | 83% | 89% | 92% | 90% | 94% | 86% | 97% | 110% | 95% | 108% | | | |
| | 19年比 | 90% | 97% | 91% | 85% | 92% | 89% | 88% | 86% | 87% | 85% | 96% | 91% | 98% | | | | |
| | 空 | 前年比 | 199% | 164% | 236% | 194% | 138% | 181% | 52% | 656% | 568% | 182% | 33% | 29% | 67% | | | |
| | 19年比 | 358% | 397% | 342% | 519% | 205% | 580% | 1180% | 1757% | 873% | 196% | 366% | 159% | 240% | | | | |
| 横浜港 | 実入り | 前年比 | 92% | 101% | 88% | 86% | 93% | 98% | 94% | 105% | 97% | 99% | 108% | 101% | 106% | | | |
| | 19年比 | 94% | 92% | 96% | 92% | 98% | 97% | 105% | 95% | 104% | 94% | 107% | 95% | 99% | | | | |
| | 空 | 前年比 | 329% | 369% | 784% | 703% | 319% | 164% | 209% | 190% | 186% | 128% | 234% | 122% | 76% | | | |
| | 19年比 | 120% | 87% | 143% | 167% | 168% | 106% | 226% | 165% | 268% | 33% | 156% | 103% | 92% | | | | |
| 名古屋港 | 実入り | 前年比 | 97% | 95% | 89% | 93% | 90% | 102% | 95% | 102% | 99% | 98% | 103% | 98% | 101% | | | |
| | 19年比 | 96% | 86% | 92% | 90% | 93% | 103% | 100% | 100% | 97% | 86% | 98% | 92% | 97% | | | | |
| | 空 | 前年比 | 197% | 312% | 179% | 329% | 336% | 281% | 299% | 197% | 165% | 214% | 180% | 130% | 134% | | | |
| | 19年比 | 98% | 56% | 90% | 125% | 152% | 167% | 156% | 172% | 165% | 121% | 147% | 120% | 132% | | | | |
| 大阪港 | 実入り | 前年比 | 97% | 97% | 81% | 87% | 83% | 97% | 88% | 93% | 98% | 102% | 100% | 92% | 107% | | | |
| | 19年比 | 89% | 93% | 97% | 82% | 91% | 96% | 87% | 94% | 86% | 93% | 94% | 90% | 95% | | | | |
| | 空 | 前年比 | 371% | 289% | 334% | 308% | 203% | 283% | 157% | 115% | 71% | 199% | 159% | 158% | 89% | | | |
| | 19年比 | 71% | 104% | 100% | 137% | 127% | 81% | 122% | 234% | 96% | 110% | 86% | 118% | 63% | | | | |
| 神戸港 | 実入り | 前年比 | 94% | 99% | 87% | 90% | 88% | 109% | 88% | 96% | 94% | 94% | 101% | 99% | 105% | | | |
| | 19年比 | 91% | 92% | 96% | 86% | 94% | 117% | 89% | 99% | 89% | 84% | 95% | 97% | 95% | | | | |
| | 空 | 前年比 | 113% | 102% | 70% | 165% | 119% | 81% | 120% | 94% | 84% | 58% | 58% | 49% | 96% | | | |
| | 19年比 | 186% | 128% | 125% | 243% | 198% | 155% | 186% | 214% | 170% | 141% | 202% | 135% | 179% | | | | |
| 5大港計 | 実入り | 前年比 | 95% | 96% | 85% | 87% | 89% | 98% | 91% | 97% | 93% | 98% | 105% | 97% | 106% | | | |
| | 19年比 | 92% | 93% | 93% | 86% | 94% | 97% | 93% | 93% | 92% | 88% | 98% | 93% | 97% | | | | |
| | 空 | 前年比 | 197% | 208% | 212% | 307% | 219% | 165% | 143% | 170% | 150% | 107% | 115% | 93% | 96% | | | |
| | 19年比 | 124% | 89% | 123% | 168% | 165% | 146% | 203% | 221% | 219% | 87% | 156% | 116% | 119% | | | | |

